

Worth County and the Cities of
Poulan, Sumner, Sylvester and Warwick



COMMUNITY PARTICIPATION PLAN

TABLE OF CONTENTS

	Page
I. INTRODUCTION	3
II. LIST OF SUGGESTED STAKEHOLDERS	3
III. LIST OF COMMUNITY PARTICIPATION TECHNIQUES	4 – 6
IV. PLAN DEVELOPMENT SCHEDULE	6 – 7
V. PUBLICIZING THE COMMUNITY AGENDA	8 – 9
VI. SUPPORTING DOCUMENTS	
▪ Worth County Steering Committee	
• Worth 2017 Community Vision Project	



COMMUNITY PARTICIPATION PLAN

INTRODUCTION

The preparation of the *Community Participation Program* is an important first step in obtaining citizen participation and involvement in the Comprehensive Plan. The purpose of the *Community Participation Program* of Worth County and the Cities of Poulan, Sumner, Sylvester and Warwick Comprehensive Plan is to insure that citizens and other stakeholders are aware of the planning process and are provided opportunities to comment on the local plan, individual plan components, or plan amendments. More importantly, citizens should have the ability to participate actively in the process of defining the community's vision, values, goals, policies, priorities, and implementation strategies.

The public participation involves the Steering Committee, Stakeholders and 4 public meetings in various locations throughout the county.

I. **LIST OF SUGGESTED STAKEHOLDERS**

The Worth County Board of Commissioners, Poulan City Council, Sumner City Council, Sylvester City Council and Warwick City Council, Steering Committee, and Southwest Georgia Regional Development Center will work together to identify those individuals and groups that have a special interest in the development of the *Community Agenda* for Worth County and the Cities of Poulan, Sumner, Sylvester and Warwick. The stakeholders are comprised of representatives of the various organizations as listed in the table below. As the planning process moves forward, additional stakeholders are likely to be identified and will be added as appropriate. Stakeholders will be interviewed and called upon to assist with the development of the *Community Agenda*.



COMMUNITY PARTICIPATION PLAN

Stakeholder Listing

Glenice King- Zoning Administrator

Gina Connell-Health Department Director

Wanda Slappey-Parks and Recreation Director

Sheriff Tompkins; Lynn Ford; Tony Strenth; Angie Schlosser; Ron Kirk; Tommy Bozeman-Emergency Management Personnel

Todd Buckner-Residential Developer/Builder

Jimmy Rouse, Hal Carter-Major Landowners

Environmental Activists

Jim McMickin-Board of Education Superintendent

Hollie Jones-Chamber of Commerce

Alex McCoy-Development Authority

Rusty Harris-Agricultural Representative

Keith Willis-Agricultural Representative

Darryl Clayton-Natural Resource Conservation Staff

Worth County and the Cities of
Poulan, Sumner, Sylvester and Warwick

3



COMMUNITY PARTICIPATION PLAN

II. LIST OF COMMUNITY PARTICIPATION TECHNIQUES

The Southwest Georgia Regional Development Center will guide the citizen participation and coordination efforts associated with the Comprehensive Plan. A series of meetings will be facilitated to build consensus through a collaborative planning process that serves to create an open, inclusive, and interactive forum.

The *Community Participation Program* tasks are derived from the essential need to educate the public and media regarding the Comprehensive Plan and ensure a broad participatory base. A specific emphasis on the views of all segments of the community will also include representation from the low and moderate income and minority populations identified in the planning process. The following tasks will aid the planning, assessment, evaluation, and implementation of the Comprehensive Plan.

1. Steering Committee

The Worth County Commission and Cities of Poulan, Sumner, Sylvester and Warwick shall appoint a Steering Committee composed of representatives from the following authorities, the business community, and citizens to direct, advise and help shape the *Community Agenda* and overall Comprehensive Plan process.

2. Steering Committee Meetings

The Steering Committee will meet monthly beginning January 2008 through June 2008 to provide guidance and feedback throughout the planning process.

3. Stakeholder Interviews

The purpose of Stakeholder interviews is to identify major community issues and develop a complete understanding of the public opinions, comments, and concerns, including potential sources of conflict, and anticipated barriers impeding effective implementation. The interviewer will use prepared survey questions. The results will be incorporated into the development of the community vision and the Comprehensive Plan and used to illustrate the impact that the feedback has had on the progress of the plan.



COMMUNITY PARTICIPATION PLAN

III. LIST OF COMMUNITY PARTICIPATION TECHNIQUES (continued)

a. Visioning Sessions

The visioning process has been accomplished through Worth 2017 Community Vision Project prepared by Georgia Institute of Technology, Georgia Department of Economic Development, University of Georgia, Albany State University and the Southwest Georgia Regional Development Center working with Worth County Economic Development Authority, Chamber of Commerce, Family Connection and Mitchell EMC. Worth 2017 facilitated four (4) public meetings conducted in various areas of the county:

- Ed's Truck Stop in Poulan, GA on April 10, 2007
- Warwick Community Center in Warwick, GA on April 12, 2007
- Gordy Baptist Church in Gordy, GA on April 17, 2007
- Worth Co Community Center in Sylvester, GA on April 24, 2007

These public meetings were announced through flyers, personal invitations and news media. Alex McCoy, EDA Director presented information on the mission of the EDA to assist local governments in planning for the future, create and retain jobs, increase private investment, and enhance the local tax digest. The presentation included information on the county's historical and current status of the tax digest. A total of sixty-five (65) stakeholders shared their thoughts, insights and ideas relating to Worth County's vision for the future.

b. Public Information Outreach Plan

The Southwest Georgia Regional Development Center staff will coordinate the development of an effective media plan to publicize information on the planning process to its citizens and other stakeholders. The following tactics will be used to inform the citizens and media about the plan progress.

1. The Sylvester Local News (legal organ for the County-weekly newspaper) and The Albany Herald (daily local newspaper) will be educated about the plan using briefings and news releases. The



COMMUNITY PARTICIPATION PLAN

development of creative press releases, feature stories, columns, and interviews will be used to better inform the public.

2. Public Information Materials-Outreach materials will be created and used to help the public understand the Comprehensive Plan. These materials will be distributed at public meetings and other geographical locations to educate and establish visible, continuous public feedback (for example: fact sheets; brochures; flyers; etc)

c. Required Public Hearings

The Southwest Georgia Regional Development Center will advertise all public hearings in compliance with adopted guidelines for public notification for initiation of the Planning Process, review and adoption of the Community Participation Plan, and review and adoption of the Comprehensive Plan. The plan will involve input from groups within Worth County and the Cities of Poulan, Sumner, Sylvester and Warwick, including but not limited to, the Planning Commission, development professionals, the general public and elected officials. The *Community Participation Program* will address the eight (8) community issues of the Comprehensive Plan: population; economic development; natural and cultural resources; community facilities and services; housing; land use; transportation and intergovernmental coordination.

d. Community Surveys & Videos

Community surveys will be distributed throughout the county in a variety of ways: the City and County websites; local newspapers; local schools; school councils; community/civic groups; churches; city halls and libraries. Online communications will be utilized on social networking sites such as “My Space” and “YouTube” for distribution of surveys and uploading of videos on how each community can be improved. Incentives will be offered to young adults and children for their participation in the survey or video activity.



COMMUNITY PARTICIPATION PLAN

The comments received from the survey and video will be publicized in the local newspaper and on each community's website.

III. PLAN DEVELOPMENT SCHEDULE

The following is a schedule for the completion of the *Community Assessment, Public Participation and Community Agenda* portions of the 2028 Worth County and the Cities of Poulan, Sumner, Sylvester and Warwick Comprehensive Plan. This schedule will be followed throughout the update process, with minor adjustments dependent on the Plan's progress. For the most current information and schedule, call Barbara Reddick at the Southwest Georgia Regional Development Center at (229) 522-3552 or email: breddick@swgrdc.org

DATE	OBJECTIVE
August 1, 2007	Sylvester Local News-article explaining Comprehensive Plan Process
August 31, 2007	Stakeholder and Steering Committee Member Identification
August-December 2007	Prepare Community Assessment and Community Participation Program
January 2008	Draft Community Assessment and Draft Participation Program completed
February - March 2008	Public Hearing for input on Draft Community Assessment and Draft Participation Program; Local Governments Resolution to Adopt Draft Community



COMMUNITY PARTICIPATION PLAN

	Assessment and Draft Community Participation Program and Transmit to DCA
January 2008-June 2008	Steering Committee Meetings held 1 st Thursday @ 6:30pm Worth Fire & Rescue - Sylvester
March-April 2008	4 Public Meetings in the county: Community Preference PowerPoint, Issues and Opportunities, Character Areas, Public Input for Community Agenda
January-June 2008	Prepare Community Agenda with guidance from Steering Committee and Public Input
June 30, 2008	Draft Community Agenda completed
July 7, 2008	Public Hearing and Review Period to Provide feedback of Draft Community Agenda
August 2008	Local Governments adoption of Transmittal Resolution and Submission of Community Agenda to DCA for Review
October 2008	Local Governments adopt Comprehensive Plan
October 2008	Community Agenda distributed and Publicized as in Community Participation Program



COMMUNITY PARTICIPATION PLAN

IV. PUBLICIZING THE COMMUNITY AGENDA

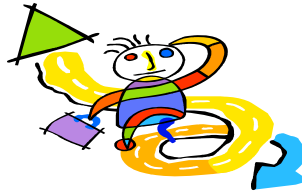
Upon completion of a draft version of the *Community Agenda*, the document will enter a 30-day review period during which citizen comments will be formally collected and appropriate revisions made to the *Agenda*. This review period is tentatively scheduled for July 2008.

Following final adoption of the complete Worth County and Cities of Poulan, Sumner, Sylvester and Warwick 2028 Comprehensive Plan, a variety of methods will be utilized to publicize the document. An advertisement in The Sylvester Local News will identify all locations where the complete Comprehensive Plan will be available along with locations where the *Community Assessment* Executive Summary and the *Community Agenda* will be available. These locations will include the Public Library, Worth County Board of Commissioner's office and Poulan, Sumner, Sylvester, and Warwick City Halls. Additionally, the document will be available on the Department of Community Affairs at www.georgiaplanning.com Local community organizations will be encouraged to provide a direct link to the document from their website. Copies will also be available through the Southwest Georgia Regional Development Center.



COMMUNITY PARTICIPATION PLAN

Help shape the Future of Worth County!



Public Meetings Scheduled:

Margaret Jones Library ~ 205 Pope St., Sylvester, GA 31791 ~ Worth County

Thursday, March 13, 2008 ~ 7:00 pm

Worth County Board of Education ~ 504 E Price St. Sylvester, GA 31791

Thursday, March 20, 2008 ~ City of Sumner

6:30 PM

Sumner City Hall ~ 706 Walnut Street, Sumner, GA 31789

Thursday, April 10, 2008 ~ City of Poulan

6:30pm

Poulan City Hall ~ 204 N. Hunton Street, Poulan GA 31781

Thursday, April 17, 2008 ~ City of Sylvester

6:30pm

Worth Fire & Rescue ~ 203 E. Willingham Street, Sylvester, GA 31791

Thursday, April 24, 2008 ~ City of Warwick

6:30pm

Warwick Community Center ~ 111 Dogwood Street, Warwick, GA 31796

What do you see for Worth County and the Cities of
Poulan, Sumner, Sylvester & Warwick in the next 20 years?

For more information, contact Barbara Reddick @ 522-3552 or breddick@swgrdc.org

Worth County and the Cities of
Poulan, Sumner, Sylvester and Warwick

10



COMMUNITY PARTICIPATION PLAN

SUPPORTING DOCUMENTS

WORTH COUNTY STEERING COMMITTEE MEMBERS

WORTH 2017 COMMUNITY VISION PROJECT

WORTH COUNTY, GEORGIA

Prepared by

Georgia Institute of Technology, Enterprise Innovation Institute

Georgia Department of Economic Development

University of Georgia

Albany State University

Worth County and the Cities of
Poulan, Sumner, Sylvester and Warwick

11



COMMUNITY PARTICIPATION PLAN

Comprehensive Plan Steering Committee	
Name	Affiliation
Maggie Cooper	City of Sylvester Representative
Tonya Cooper	Moultrie Technical College ED/CE
Brenda Dent	City of Sylvester Representative
Lynn Ford	Worth County Commission
Becky Geer	Economic Development Representative
Arthur Green	Sylvester Planning Commission
Amy Gray	City of Sumner Representative
Judy Hall	City of Sylvester Representative
Hollie Jones	Chamber of Commerce
Jessica Jones	Poulan Representative
Stanley Jones	Warwick Planning Commission
Van Jones	City of Poulan Representative
Dan Kinchen	Warwick Representative
Glenice King	Worth County Planning Commission
Dr. Thomas G. Latimer	Economic Development Representative
Kristy Maddox	Media
James MCClearly	Worth County Commission
Jim McMickin	Worth County Board of Education
Pat Miner	Economic Development Representative
Daniel Nesbit	Worth County Commission
Demar Milton	City of Sylvester Representative
Steve Miner	Economic Development Representative
Tara Okon	Non-Profit Representative
Ginny Pike	Worth County Family Connection
Lester Potts	Moultrie Technical College
Darlene Powell	City of Sylvester Representative
Sharon Rhoads	Worth County Family Connection
Thomas Rhoads	Private Citizen
Jimmy Rouse	Sylvester Planning Commission
Billy Senkbeil	Agriculture/Environment
Marsha Senkbeil	Sylvester Planning Commission
Tommy Snipes	Sylvester City Council
Dwayne Strenth	Agriculture/Environment
Roy Sumner	Development Authority Representative
Allen Tison	Agriculture/ Environment
Bonnie Walker	Sumner Representative
Hazel Wright	Warwick Representative
Clay Young	Agriculture /Environment
James Young	Sumner Representative

Worth County and the Cities of
 Poulan, Sumner, Sylvester and Warwick



COMMUNITY PARTICIPATION PLAN

Document prepared by:

Barbara Reddick

Rozanne Eubanks

Kerrie Davis

Lauren Miller

Southwest Georgia Regional Development Center

30 W Broad Street

PO Box 346

Camilla, GA 31730-0346

(229) 522-3552 (229) 522-3558 fax

Contact Person: Barbara Reddick

breddick@swgrdc.org

Worth County and the Cities of
Poulan, Sumner, Sylvester and Warwick

13

