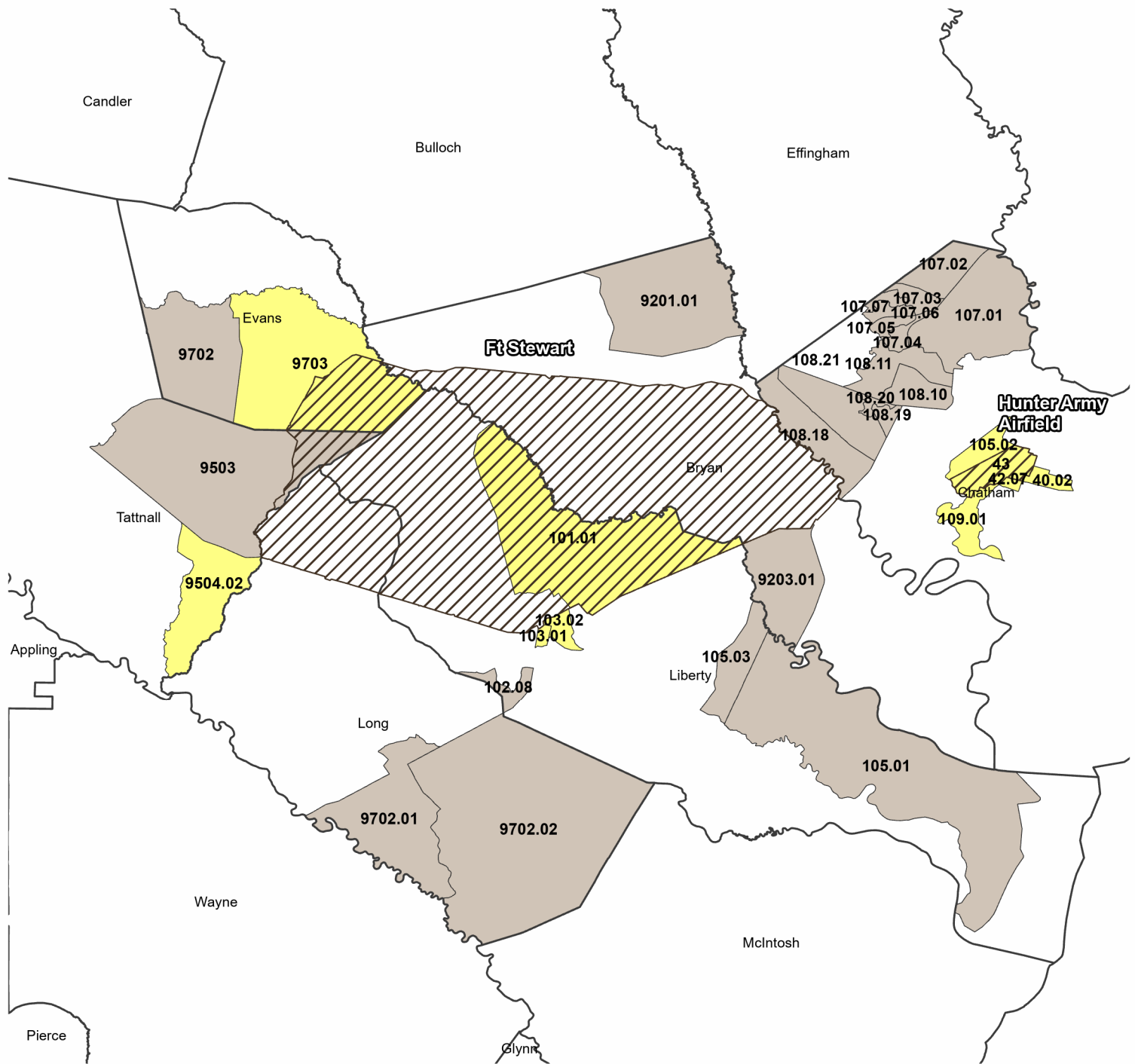


Georgia Military Bases



Legend

- Tracts with 15% or greater poverty (eligible for MZ tax credit) Under O.C.G.A. § 48-7-40.1(c)(2)
- Tracts eligible under O.C.G.A. 48-7-40.1(c)(2.1)
- Military Bases (TIGER 2020)

Data source: Poverty: U.S. Bureau of the Census, American Community Survey 5 year data, 2018 - 2022
 Census Tracts: TIGER 2020, Military Bases: TIGER 2020