

**Georgia Department of Community Affairs
Office of Research**

COUNTY JAIL INMATE POPULATION REPORT*

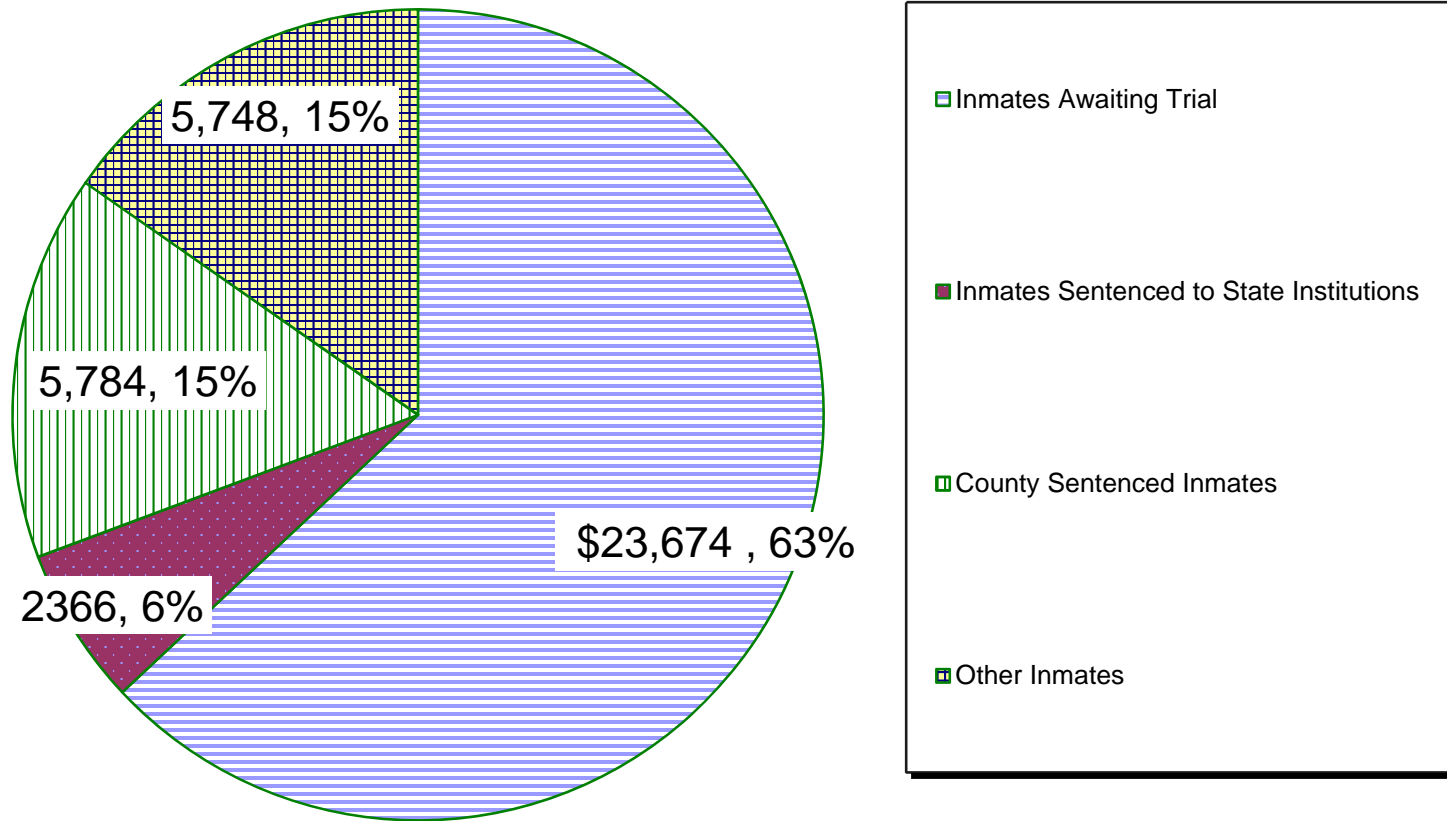
**Inmate Counts Reported To GBI/GCIC By Each Sheriff's Office
For Their Inmate Population AS OF: Thursday, Nov 1, 2018**

DATA SUMMARY

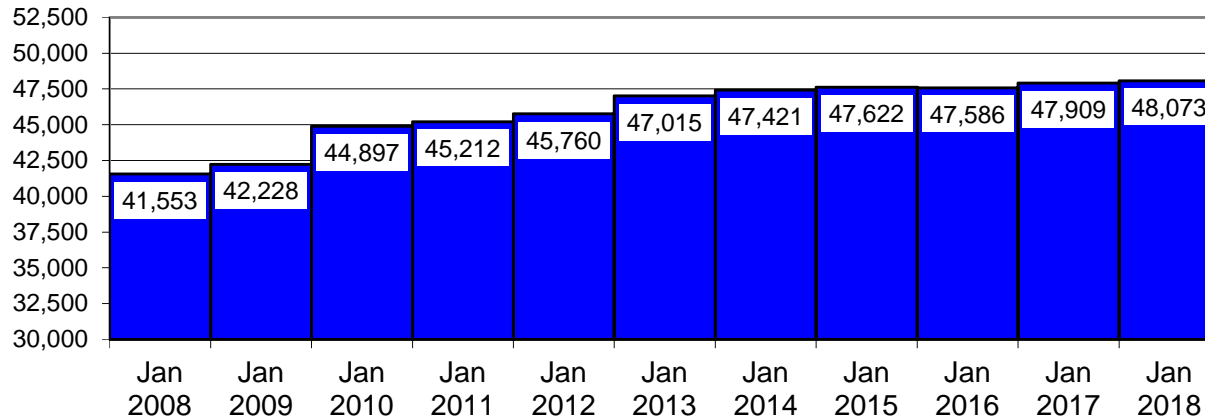
ITEM	Nov 2018		Oct 2018		INCR /DECR	
	#	%	#	%	#	%
1 Number of Jail Inmates	37,572		38,652		-1,080	
2 Capacity of Jails Reporting (permanent beds)	48,594		48,594		0	
3 Percent of Jail Capacity		77%		80%		-3%
4 Number of Jails Over Capacity	23		23		0	
5 Inmates Sentenced to State Institutions	2,366		2,501		-135	
6 Percent of State-Sentenced Inmates Housed at County Level		6%		6%		0%
7 Number of Inmates Awaiting Trial	23,674		25,065		-1,391	
8 Percent of Inmates Awaiting Trial		63%		65%		-2%
9 Number of Inmates Sentenced to County Jails	5,784		5,473		311	
10 Percent of Inmates Sentenced to County Jails		15%		14%		1%
11 Number of Other Inmates	5,748		5,613		135	
12 Percent of Other Inmates		15%		15%		0%
13 Percent of Jails Reporting		100%		100%		0%
14 Number of Counties with Jails	143		143		0	

*** In cooperation with the Georgia Crime Information Center, the Georgia Department of Community Affairs compiles and publishes this report for the Georgia Sheriff's Association and the Association County Commissioners of Georgia. All data in this report has been provided to GBI/GCIC by Sheriff's offices and transferred from the Georgia Bureau of Investigation to DCA for publication."

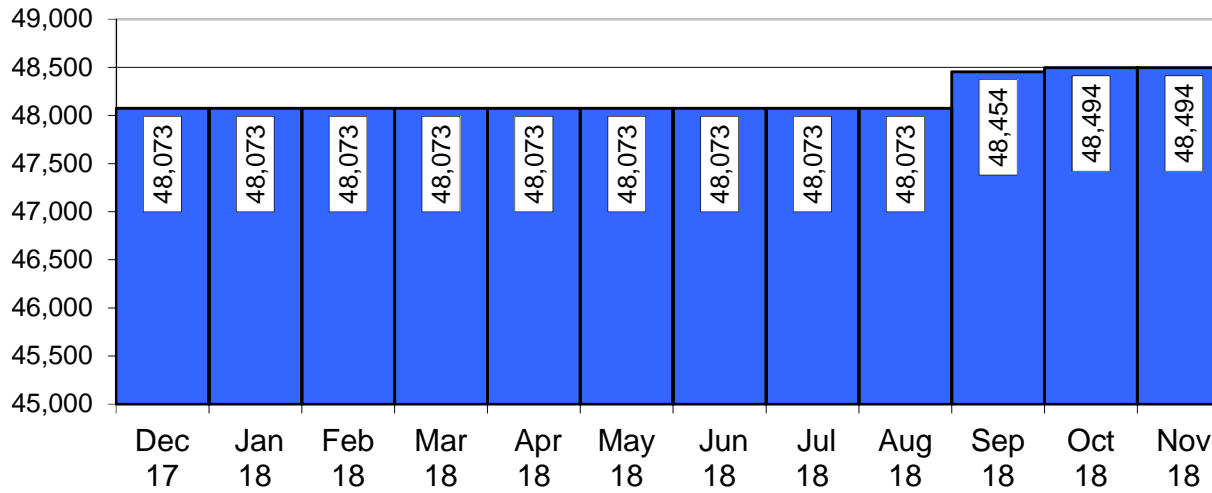
Jail Composition November 2018

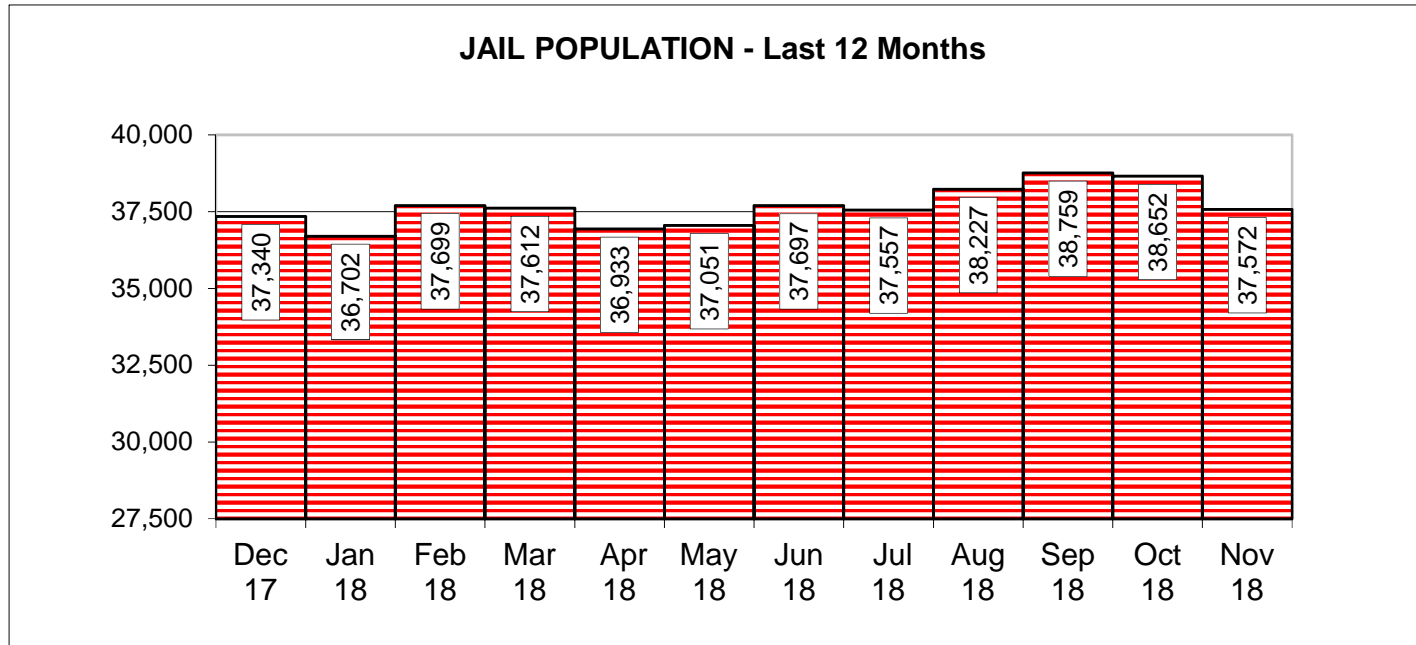
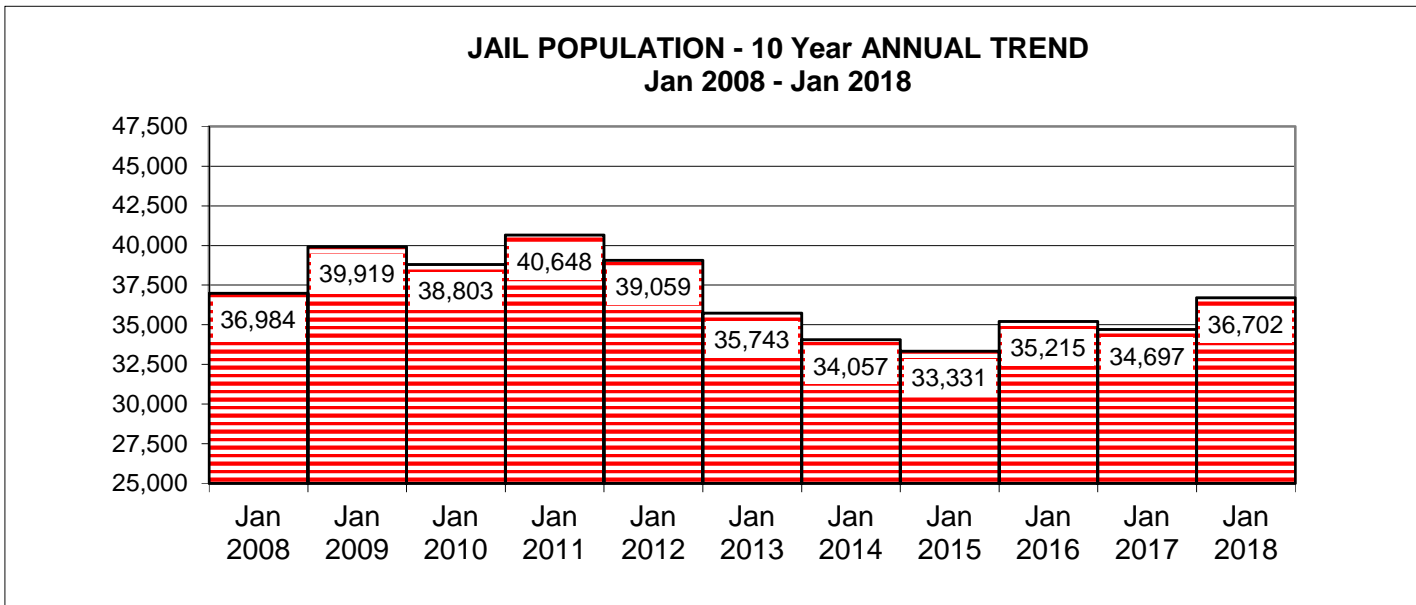


COUNTY JAIL CAPACITY - 10 Year ANNUAL TREND Jan 2008 to Jan 2018



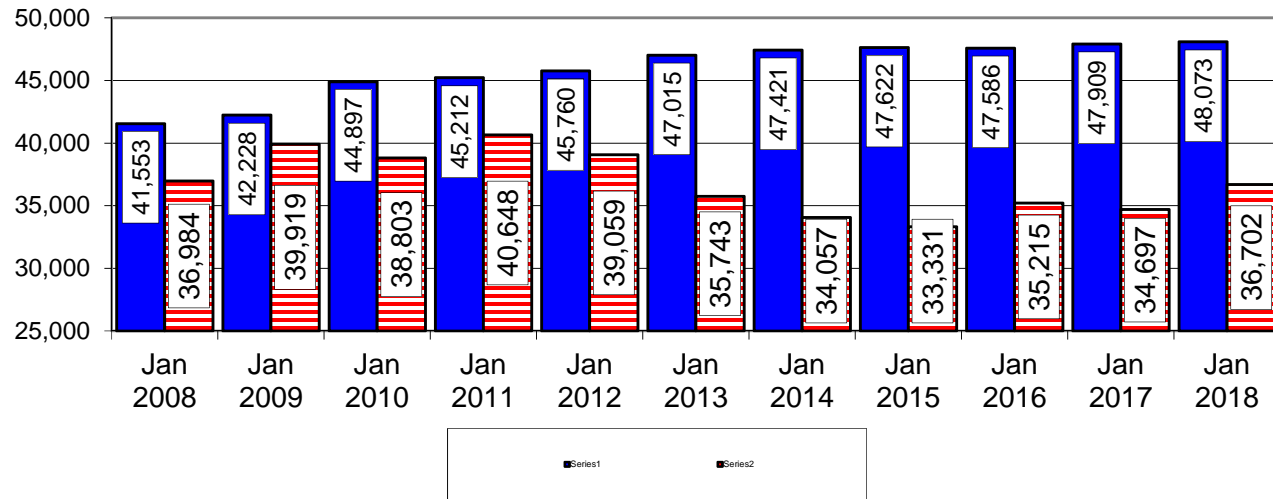
COUNTY JAIL CAPACITY - LAST 12 MONTHS



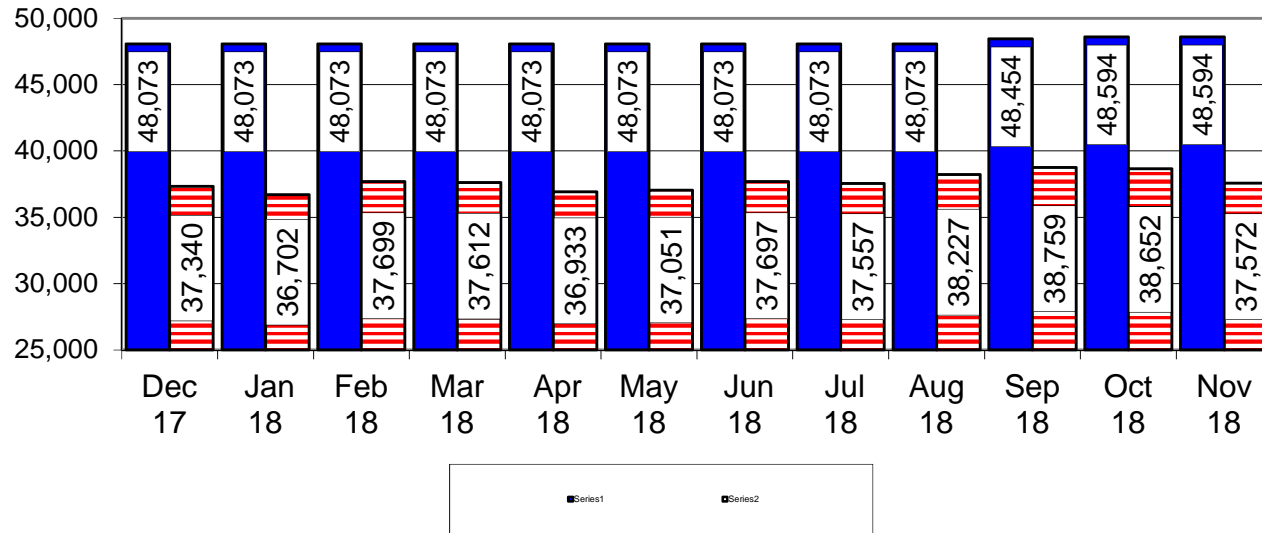


Source: All data in this report has been provided to DCA by the Georgia Bureau of Investigation (GBI).

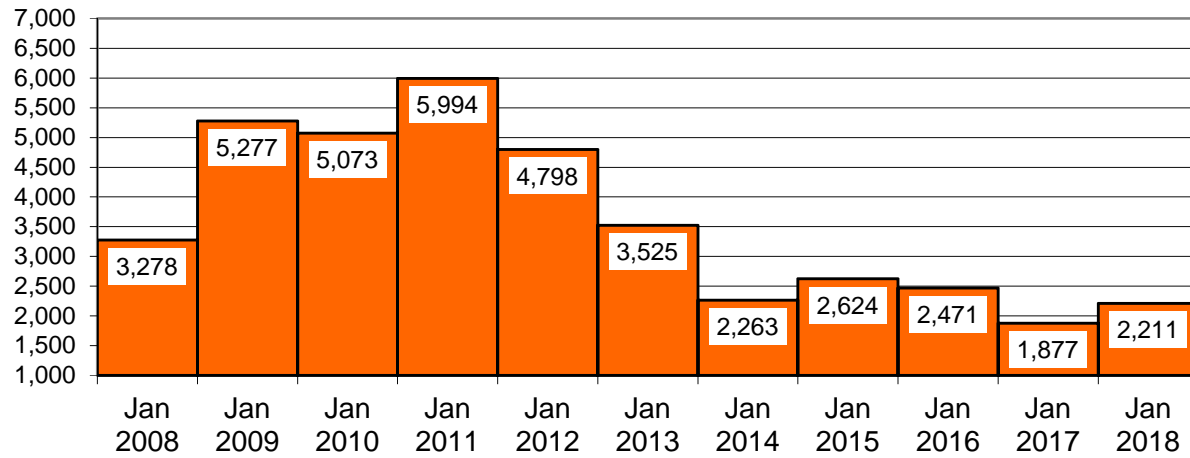
JAIL CAPACITY VS INMATE POPULATION - 10 Year ANNUAL TREND
Jan 2008 - Jan 2018



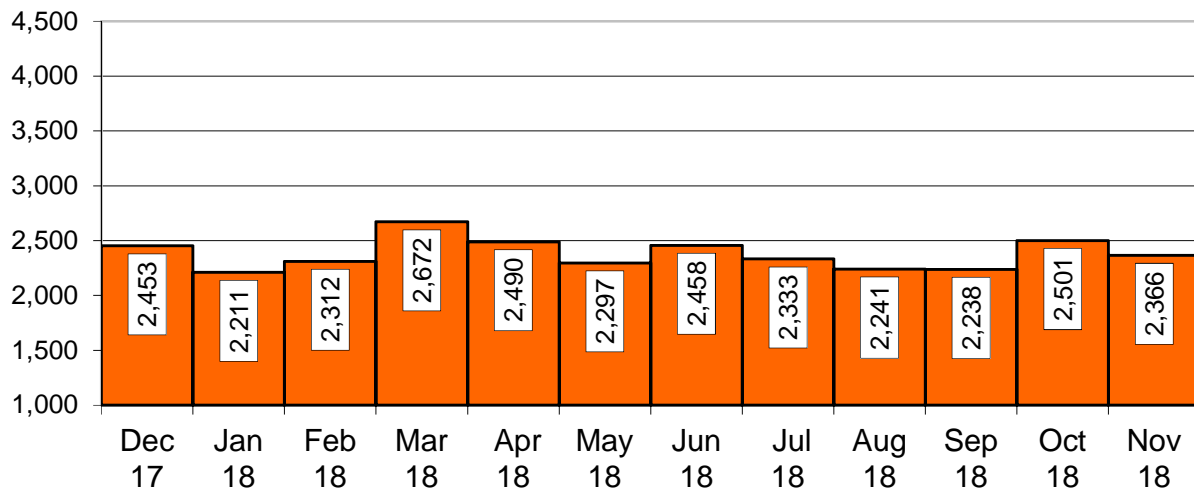
JAIL CAPACITY VS INMATE POPULATION - LAST 12 MONTHS

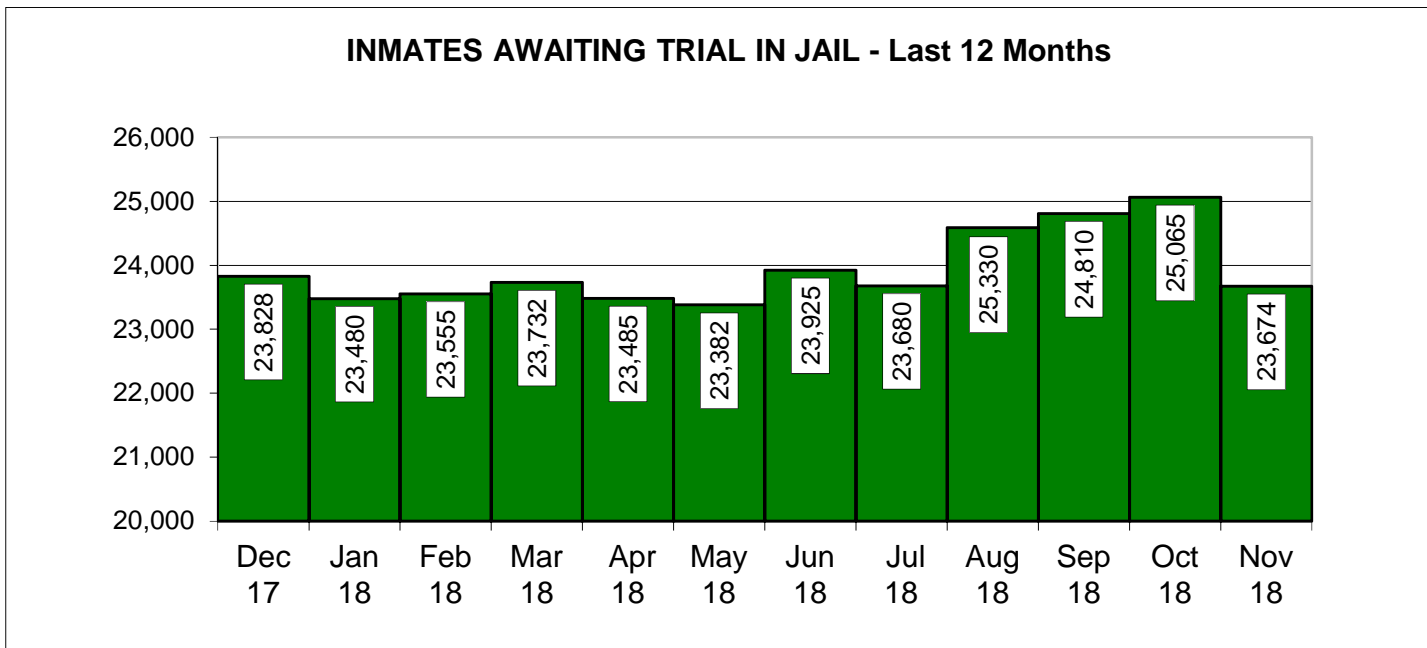
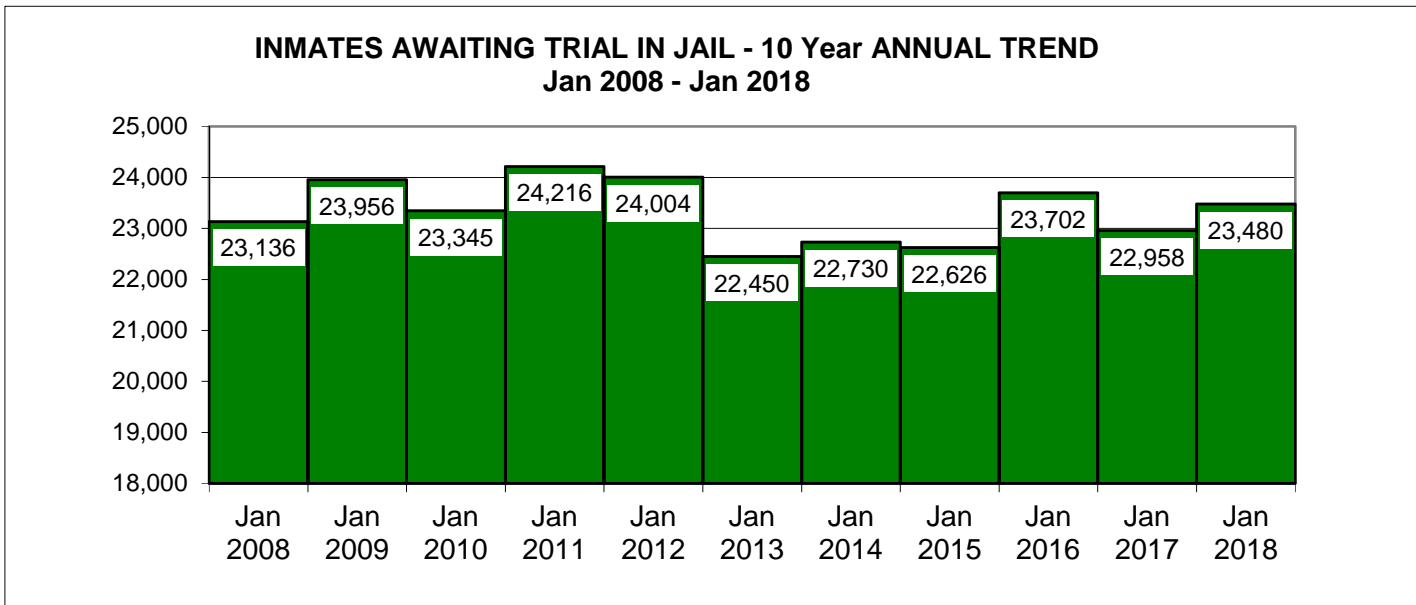


INMATES SENTENCED TO STATE - 10 Year ANNUAL TREND
Jan 2008 - Jan 2018



INMATES SENTENCED TO STATE - Last 12 Months





County Jail Report
Primary Jail Capacity Data
Nov 2018

(Does not include Inmates housed in other detention facilities such as Work Release Centers, County Prisons, etc.)

Jurisdiction	Total Number of Inmates			Inmates as % of Capacity		Number of Inmates Sentenced to State		Number of Inmates Awaiting Trial in Jail		Number of Inmates Serving County Sentence		Number of Other Inmates	
	In Jail	Jail Capacity		Number	% of Total	Number	% of Total	Number	% of Total	Number	% of Total	Number	% of Total
001	APPLING	71	84	85%	7	10%	33	46%	7	10%	24	34%	
002	ATKINSON	14	18	78%	0	0%	11	79%	1	7%	2	14%	
003	BACON	67	76	88%	0	0%	0	0%	49	73%	18	27%	
004	BAKER NO JAIL	0	0	0%	0	0%	0	0%	0	0%	0	0%	
005	BALDWIN	227	316	72%	2	1%	44	19%	73	32%	108	48%	
006	BANKS	60	60	100%	3	5%	18	30%	6	10%	33	55%	
007	BARROW	307	391	79%	22	7%	254	83%	22	7%	9	3%	
008	BARTOW	635	471	135%	24	4%	354	56%	239	38%	18	3%	
009	BEN HILL	107	136	79%	4	4%	83	78%	13	12%	7	7%	
010	BERRIEN	85	74	115%	0	0%	0	0%	41	48%	44	52%	
011	BIBB	821	966	85%	60	7%	352	43%	64	8%	345	42%	
012	BLECKLEY	36	72	50%	0	0%	36	100%	0	0%	0	0%	
013	BRANTLEY	121	124	98%	18	15%	36	30%	21	17%	46	38%	
014	BROOKS	69	112	62%	0	0%	64	93%	1	1%	4	6%	
015	BRYAN	38	68	56%	2	5%	27	71%	2	5%	7	18%	
016	BULLOCH	423	387	109%	25	6%	221	52%	105	25%	72	17%	
017	BURKE	136	138	99%	0	0%	96	71%	1	1%	39	29%	
018	BUTTS	190	316	60%	1	1%	86	45%	18	9%	85	45%	
019	CALHOUN	24	42	57%	2	8%	19	79%	3	13%	0	0%	
020	CAMDEN	112	108	104%	1	1%	103	92%	3	3%	5	4%	
021	CANDLER	26	72	36%	2	8%	18	69%	5	19%	1	4%	
022	CARROLL	460	682	67%	2	0%	436	95%	2	0%	20	4%	
023	CATOOSA	236	248	95%	1	0%	144	61%	18	8%	73	31%	
024	CHARLTON NO JAIL	0	0	0%	0	0%	0	0%	0	0%	0	0%	
025	CHATHAM	1600	1524	105%	19	1%	1485	93%	45	3%	51	3%	
026	CHATTAHOOCHEE NO JAIL	0	0	0%	0	0%	0	0%	0	0%	0	0%	
027	CHATTOOGA	44	46	96%	12	27%	14	32%	2	5%	16	36%	
028	CHEROKEE	498	512	97%	3	1%	412	83%	82	16%	1	0%	
029	CLARKE	358	590	61%	27	8%	271	76%	59	16%	1	0%	
030	CLAY NO JAIL	0	0	0%	0	0%	0	0%	0	0%	0	0%	
031	CLAYTON	1657	1920	86%	224	14%	183	11%	750	45%	500	30%	
032	CLINCH NO JAIL	0	0	0%	0	0%	0	0%	0	0%	0	0%	
033	COBB	2013	1925	105%	147	7%	1451	72%	415	21%	0	0%	
034	COFFEE	340	448	76%	32	9%	184	54%	8	2%	116	34%	
035	COLQUITT	219	210	104%	2	1%	154	70%	52	24%	11	5%	
036	COLUMBIA	310	266	117%	14	5%	244	79%	41	13%	11	4%	
037	COOK	75	108	69%	1	1%	23	31%	28	37%	23	31%	
038	COWETA	364	300	121%	10	3%	207	57%	142	39%	5	1%	
039	CRAWFORD	20	24	83%	1	5%	18	90%	0	0%	1	5%	
040	CRISP	228	170	134%	14	6%	103	45%	7	3%	104	46%	
041	DADE	61	99	62%	9	15%	40	66%	6	10%	6	10%	
042	DAWSON	103	200	52%	2	2%	1	1%	65	63%	35	34%	

County Jail Report
Primary Jail Capacity Data
Nov 2018

(Does not include Inmates housed in other detention facilities such as Work Release Centers, County Prisons, etc.)

Jurisdiction	Total Number of Inmates In Jail	Jail Capacity	Inmates as % of Capacity	Number of Inmates Sentenced to State		Number of Inmates Awaiting Trial in Jail		Number of Inmates Serving County Sentence		Number of Other Inmates		
				Number	% of Total	Number	% of Total	Number	% of Total	Number	% of Total	
043	DECATUR	90	175	51%	7	8%	77	86%	3	3%	3	3%
044	DEKALB	1865	3636	51%	101	5%	1437	77%	253	14%	74	4%
045	DODGE	109	162	67%	6	6%	79	72%	2	2%	22	20%
046	DOOLY	96	155	62%	7	7%	51	53%	9	9%	29	30%
047	DOUGHERTY	661	1230	54%	43	7%	502	76%	101	15%	15	2%
048	DOUGLAS	689	1500	46%	25	4%	544	79%	102	15%	18	3%
049	EARLY	39	66	59%	1	3%	27	69%	3	8%	8	21%
050	ECHOLS NO JAIL	0	0	0%	0	0%	0	0%	0	0%	0	0%
051	EFFINGHAM	200	230	87%	7	4%	177	89%	13	7%	3	2%
052	ELBERT	94	96	98%	3	3%	52	55%	12	13%	27	29%
053	EMANUEL	108	102	106%	11	10%	72	67%	4	4%	21	19%
054	EVANS	17	26	65%	0	0%	17	100%	0	0%	0	0%
055	FANNIN	54	84	64%	3	6%	49	91%	1	2%	1	2%
056	FAYETTE	254	384	66%	7	3%	187	74%	58	23%	2	1%
057	FLOYD	607	838	72%	6	1%	341	56%	159	26%	101	17%
058	FORSYTH	345	608	57%	88	26%	214	62%	43	12%	0	0%
059	FRANKLIN	85	72	118%	5	6%	54	64%	23	27%	3	4%
060	FULTON	2581	2688	96%	74	3%	1923	75%	160	6%	424	16%
061	GILMER	121	142	85%	4	3%	100	83%	3	2%	14	12%
062	GLASCOCK NO JAIL	0	0	0%	0	0%	0	0%	0	0%	0	0%
063	GLYNN	426	610	70%	46	11%	224	53%	19	4%	137	32%
064	GORDON	321	376	85%	25	8%	193	60%	93	29%	10	3%
065	GRADY	69	125	55%	3	4%	53	77%	12	17%	1	1%
066	GREENE	72	125	58%	28	39%	31	43%	6	8%	7	10%
067	GWINNETT	2126	2744	77%	22	1%	1454	68%	44	2%	606	29%
068	HABERSHAM	159	130	122%	8	5%	138	87%	7	4%	6	4%
069	HALL	790	1026	77%	211	27%	378	48%	181	23%	20	3%
070	HANCOCK	17	80	21%	2	12%	13	76%	2	12%	0	0%
071	HARALSON	102	120	85%	5	5%	90	88%	6	6%	1	1%
072	HARRIS	71	100	71%	2	3%	29	41%	5	7%	35	49%
073	HART	50	50	100%	2	4%	45	90%	0	0%	3	6%
074	HEARD	54	60	90%	7	13%	40	74%	4	7%	3	6%
075	HENRY	830	908	91%	17	2%	340	41%	473	57%	0	0%
076	HOUSTON	437	507	86%	40	9%	322	74%	73	17%	2	0%
077	IRWIN	988	1201	82%	7	1%	17	2%	3	0%	961	97%
078	JACKSON	172	452	38%	1	1%	130	76%	21	12%	20	12%
079	JASPER	69	64	108%	1	1%	57	83%	10	14%	1	1%
080	JEFFDAVIS/HAZ	58	64	91%	9	16%	45	78%	2	3%	2	3%
081	JEFFERSON	69	128	54%	8	12%	0	0%	39	57%	22	32%
082	JENKINS	16	24	67%	0	0%	3	19%	5	31%	8	50%
083	JOHNSON	27	42	64%	10	37%	1	4%	1	4%	15	56%
084	JONES	97	125	78%	14	14%	62	64%	12	12%	9	9%

County Jail Report
Primary Jail Capacity Data
Nov 2018

(Does not include Inmates housed in other detention facilities such as Work Release Centers, County Prisons, etc.)

Jurisdiction	Total Number of Inmates In Jail	Jail Capacity	Inmates as % of Capacity	Number of Inmates Sentenced to State		Number of Inmates Awaiting Trial in Jail		Number of Inmates Serving County Sentence		Number of Other Inmates	
				Number	% of Total	Number	% of Total	Number	% of Total	Number	% of Total
085 LAMAR	55	158	35%	13	24%	10	18%	32	58%	0	0%
086 LANIER NO JAIL	0	0	0%	0	0%	0	0%	0	0%	0	0%
087 LAURENS	172	270	64%	13	8%	145	84%	8	5%	6	3%
088 LEE	83	112	74%	0	0%	82	99%	0	0%	1	1%
089 LIBERTY	172	300	57%	11	6%	119	69%	18	10%	24	14%
090 LINCOLN	62	81	77%	0	0%	21	34%	1	2%	40	65%
091 LONG NO JAIL	0	0	0%	0	0%	0	0%	0	0%	0	0%
092 LOWNDES	579	920	63%	33	6%	461	80%	70	12%	15	3%
093 LUMPKIN	137	150	91%	24	18%	67	49%	19	14%	27	20%
094 MCDUFFIE	83	222	37%	4	5%	62	75%	2	2%	15	18%
095 MCINTOSH	84	114	74%	2	2%	70	83%	2	2%	10	12%
096 MACON	22	68	32%	0	0%	22	100%	0	0%	0	0%
097 MADISON	84	96	88%	3	4%	39	46%	6	7%	36	43%
098 MARION	19	30	63%	0	0%	14	74%	3	16%	2	11%
099 MERIWETHER	80	106	75%	0	0%	67	84%	1	1%	12	15%
100 MILLER	25	70	36%	2	8%	15	60%	6	24%	2	8%
101 MITCHELL	52	116	45%	2	4%	43	83%	5	10%	2	4%
102 MONROE	96	168	57%	2	2%	93	97%	0	0%	1	1%
103 MONTGOMERY NO JAIL	0	0	0%	0	0%	0	0%	0	0%	0	0%
104 MORGAN	52	192	27%	2	4%	32	62%	13	25%	5	10%
105 MURRAY	150	160	94%	18	12%	118	79%	14	9%	0	0%
106 MUSCOGEE	1124	1069	105%	85	8%	886	79%	77	7%	76	7%
107 NEWTON	415	600	69%	109	26%	81	20%	225	54%	0	0%
108 OCONEE	32	136	24%	1	3%	19	59%	12	38%	0	0%
109 OGLETHORPE	60	64	94%	3	5%	35	58%	6	10%	16	27%
110 PAULDING	226	299	76%	19	8%	159	70%	35	15%	13	6%
111 PEACH	99	125	79%	4	4%	89	90%	2	2%	4	4%
112 PICKENS	69	140	49%	4	6%	25	36%	35	51%	5	7%
113 PIERCE	66	72	92%	2	3%	60	91%	3	5%	1	2%
114 PIKE	23	34	68%	1	4%	19	83%	3	13%	0	0%
115 POLK	214	362	59%	7	3%	51	24%	11	5%	145	68%
116 PULASKI	29	42	69%	4	14%	24	83%	1	3%	0	0%
117 PUTNAM	78	120	65%	6	8%	55	71%	14	18%	3	4%
118 QUITMAN NO JAIL	0	0	0%	0	0%	0	0%	0	0%	0	0%
119 RABUN	105	102	103%	0	0%	66	63%	29	28%	10	10%
120 RANDOLPH	53	121	44%	0	0%	52	98%	1	2%	0	0%
121 RICHMOND	938	910	103%	32	3%	763	81%	9	1%	134	14%
122 ROCKDALE	332	692	48%	12	4%	244	73%	43	13%	33	10%
123 SCHLEY	2	12	17%	2	100%	0	0%	0	0%	0	0%
124 SCREVEN	45	247	18%	4	9%	22	49%	7	16%	12	27%
125 SEMINOLE	60	54	111%	3	5%	48	80%	6	10%	3	5%
126 SPALDING	440	547	80%	14	3%	404	92%	19	4%	3	1%

County Jail Report
Primary Jail Capacity Data
Nov 2018

(Does not include Inmates housed in other detention facilities such as Work Release Centers, County Prisons, etc.)

Jurisdiction	Total Number of Inmates In Jail	Jail Capacity	Inmates as % of Capacity	Number of Inmates Sentenced to State		Number of Inmates Awaiting Trial in Jail		Number of Inmates Serving County Sentence		Number of Other Inmates		
				Number	% of Total	Number	% of Total	Number	% of Total	Number	% of Total	
127	STEPHENS	175	192	91%	21	12%	140	80%	2	1%	12	7%
128	STEWART NO JAIL	0	0	0%	0	0%	0	0%	0	0%	0	0%
129	SUMTER	154	262	59%	7	5%	98	64%	2	1%	47	31%
130	TALBOT NO JAIL	0	0	0%	0	0%	0	0%	0	0%	0	0%
131	TALIAFERRO NO JAIL	0	0	0%	0	0%	0	0%	0	0%	0	0%
132	TATTNALL	95	136	70%	7	7%	54	57%	5	5%	29	31%
133	TAYLOR	33	62	53%	0	0%	18	55%	2	6%	13	39%
134	TELFAIR	32	36	89%	0	0%	31	97%	0	0%	1	3%
135	TERRELL	34	55	62%	2	6%	11	32%	0	0%	21	62%
136	THOMAS	199	270	74%	7	4%	162	81%	28	14%	2	1%
137	TIFT	294	260	113%	9	3%	60	20%	160	54%	65	22%
138	TOOMBS	111	128	87%	28	25%	72	65%	4	4%	7	6%
139	TOWNS	62	50	124%	1	2%	38	61%	0	0%	23	37%
140	TREUTLEN	44	42	105%	1	2%	18	41%	1	2%	24	55%
141	TROUP	500	540	93%	30	6%	337	67%	125	25%	8	2%
142	TURNER	46	102	45%	0	0%	0	0%	29	63%	17	37%
143	TWIGGS	22	48	46%	0	0%	0	0%	20	91%	2	9%
144	UNION	64	57	112%	23	36%	33	52%	5	8%	3	5%
145	UPSON	106	213	50%	2	2%	84	79%	9	8%	11	10%
146	WALKER	245	225	109%	50	20%	188	77%	7	3%	0	0%
147	WALTON	422	440	96%	87	21%	246	58%	74	18%	15	4%
148	WARE	410	500	82%	8	2%	223	54%	75	18%	104	25%
149	WARREN NO JAIL	0	0	0%	0	0%	0	0%	0	0%	0	0%
150	WASHINGTON	71	236	30%	3	4%	0	0%	11	15%	57	80%
151	WAYNE	126	170	74%	0	0%	0	0%	42	33%	84	67%
152	WEBSTER NO JAIL	0	0	0%	0	0%	0	0%	0	0%	0	0%
153	WHEELER	7	18	39%	0	0%	7	100%	0	0%	0	0%
154	WHITE	115	176	65%	4	3%	92	80%	15	13%	4	3%
155	WHITFIELD	477	551	87%	56	12%	308	65%	53	11%	60	13%
156	WILCOX	13	16	81%	8	62%	1	8%	4	31%	0	0%
157	WILKES	35	80	44%	4	11%	20	57%	7	20%	4	11%
158	WILKINSON	36	44	82%	1	3%	31	86%	0	0%	4	11%
159	WORTH	37	46	80%	7	19%	27	73%	3	8%	0	0%
	Grand Totals	37,572	48,594	77%	2,366	6%	23,674	63%	5,784	15%	5,748	15%