

**Georgia Department of Community Affairs
Office of Research**

COUNTY JAIL INMATE POPULATION REPORT*

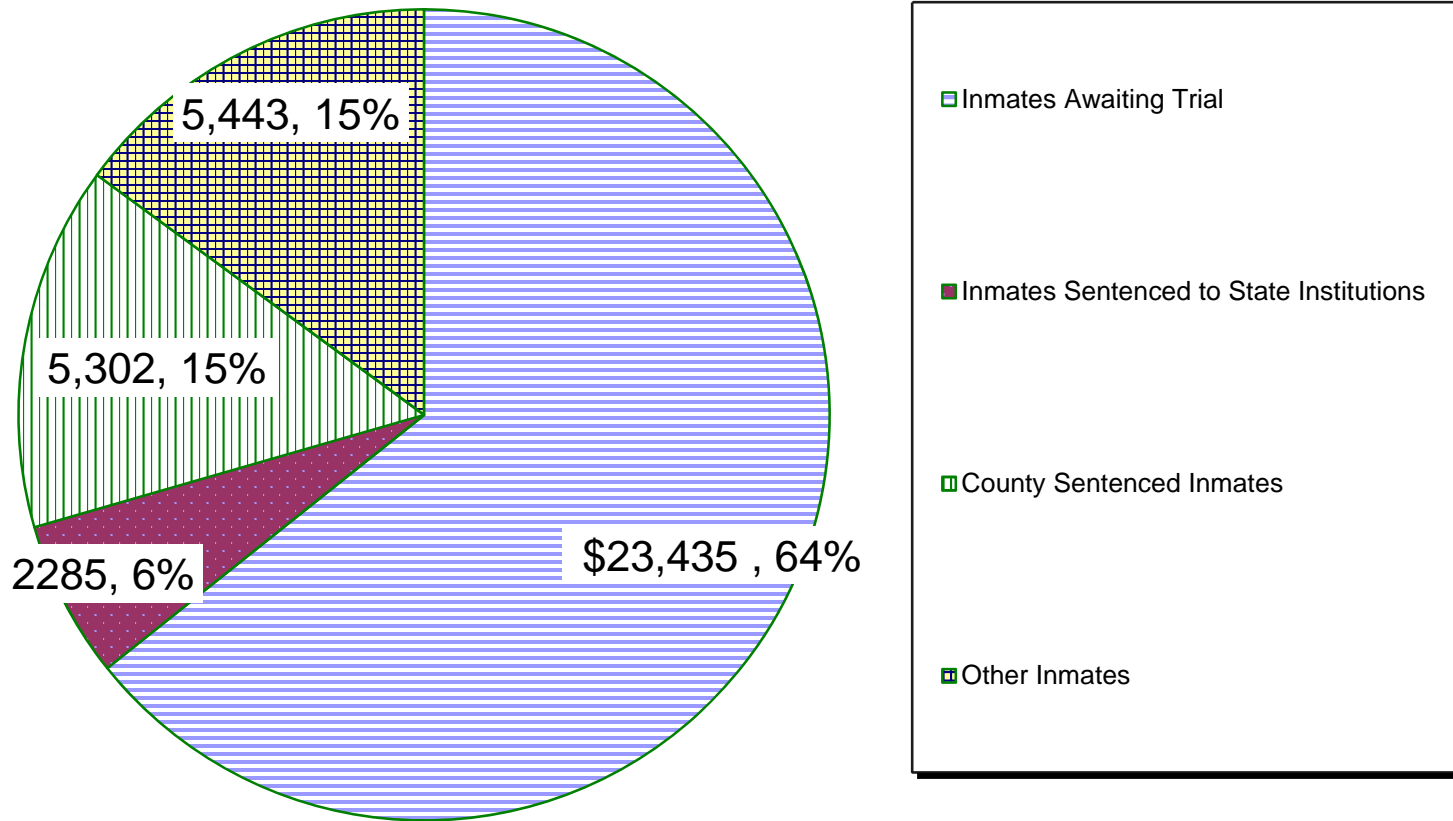
**Inmate Counts Reported To GBI/GCIC By Each Sheriff's Office
For Their Inmate Population AS OF: Thursday, Dec 6, 2018**

DATA SUMMARY

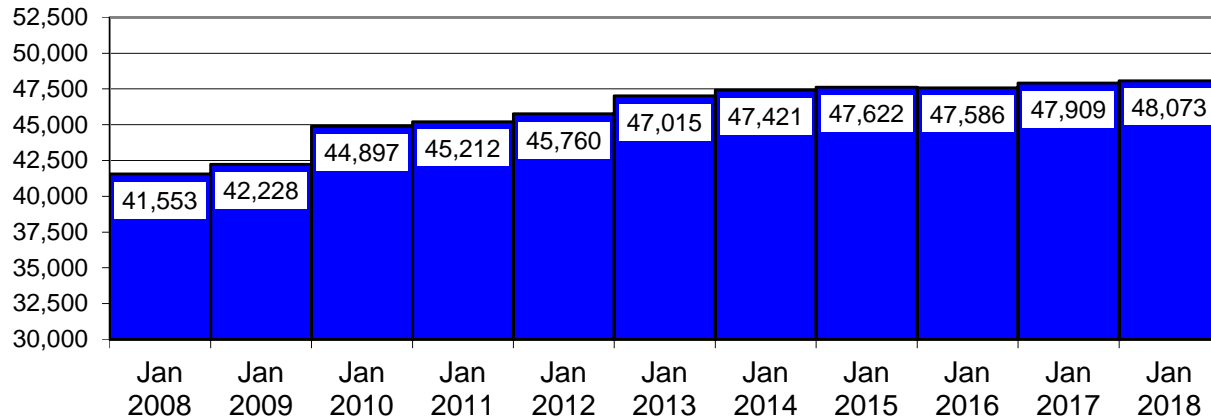
ITEM	Dec 2018		Nov 2018		INCR /DECR	
	#	%	#	%	#	%
1 Number of Jail Inmates	36,465		37,572		-1,107	
2 Capacity of Jails Reporting (permanent beds)	48,594		48,594		0	
3 Percent of Jail Capacity		75%		77%		-2%
4 Number of Jails Over Capacity	18		23		-5	
5 Inmates Sentenced to State Institutions	2,285		2,366		-81	
6 Percent of State-Sentenced Inmates Housed at County Level		6%		6%		0%
7 Number of Inmates Awaiting Trial	23,435		23,674		-239	
8 Percent of Inmates Awaiting Trial		64%		63%		-1%
9 Number of Inmates Sentenced to County Jails	5,302		5,784		-482	
10 Percent of Inmates Sentenced to County Jails		15%		15%		0%
11 Number of Other Inmates	5,443		5,748		-305	
12 Percent of Other Inmates		15%		15%		0%
13 Percent of Jails Reporting		100%		100%		0%
14 Number of Counties with Jails	143		143		0	

*** In cooperation with the Georgia Crime Information Center, the Georgia Department of Community Affairs compiles and publishes this report for the Georgia Sheriff's Association and the Association County Commissioners of Georgia. All data in this report has been provided to GBI/GCIC by Sheriff's offices and transferred from the Georgia Bureau of Investigation to DCA for publication."

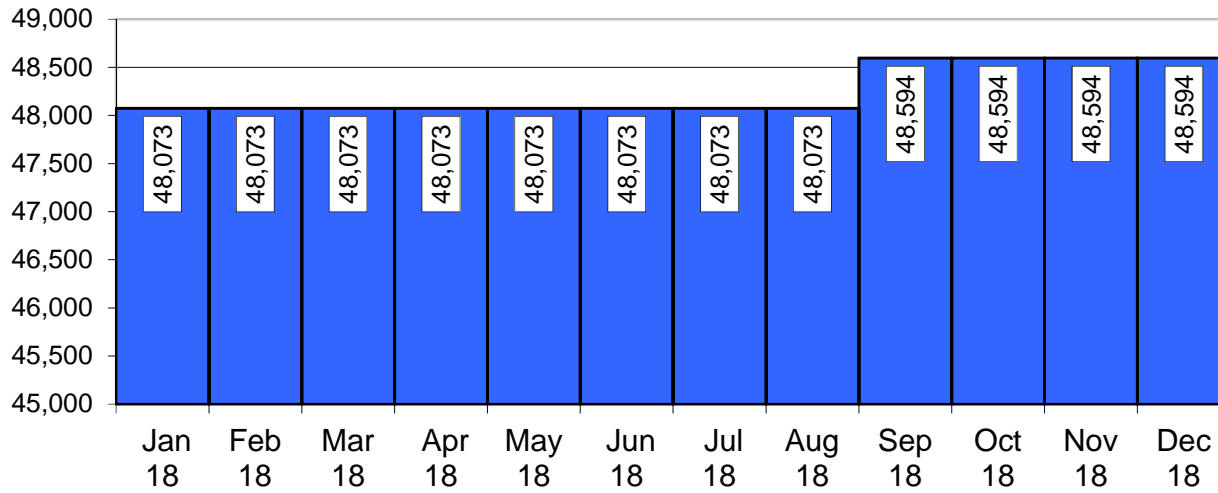
Jail Composition December 2018

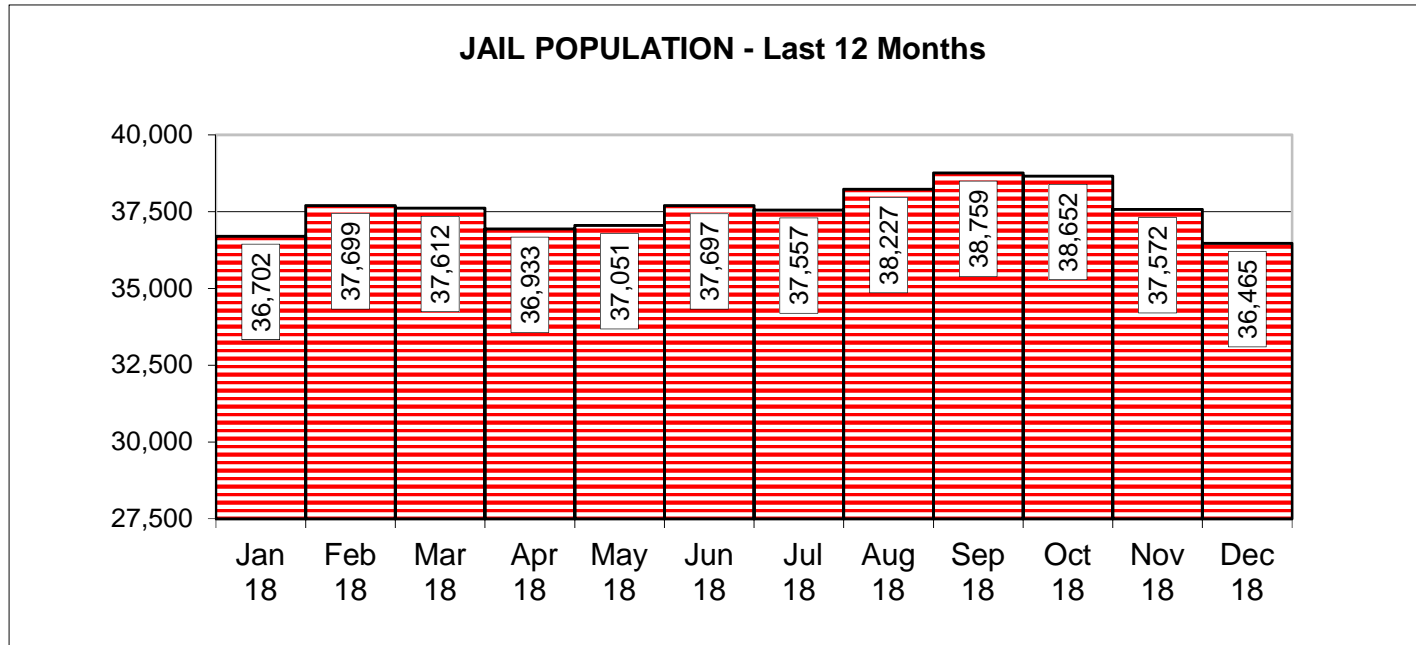
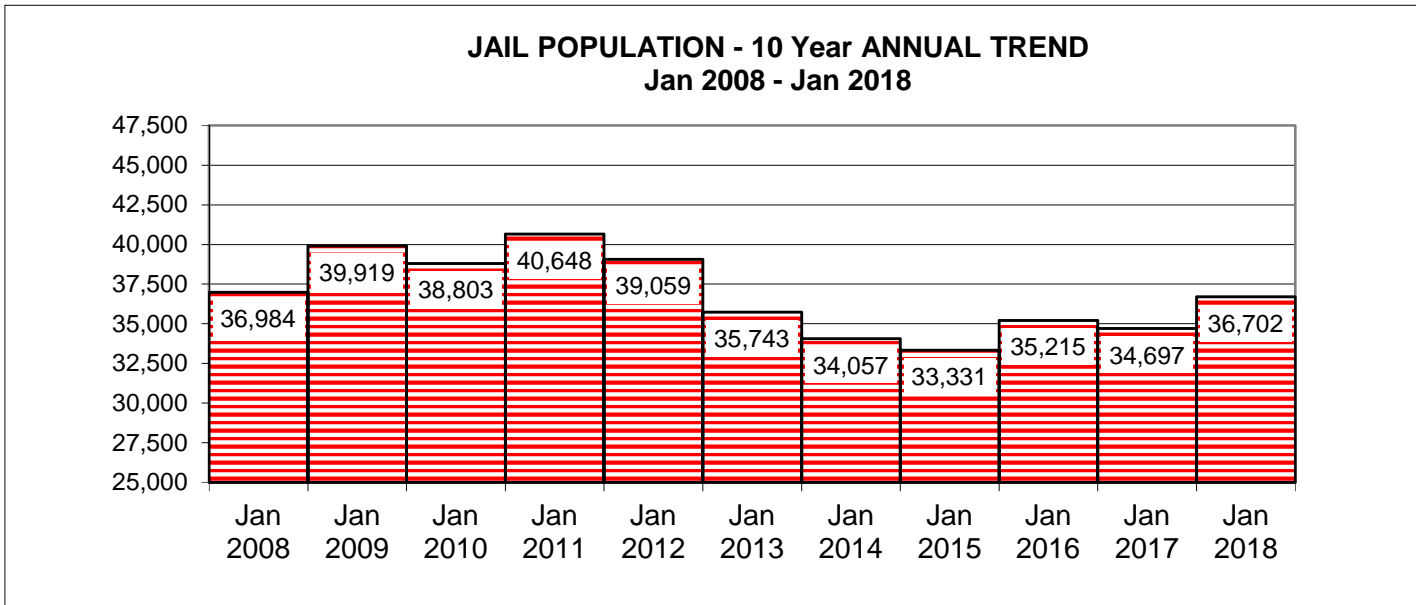


COUNTY JAIL CAPACITY - 10 Year ANNUAL TREND
Jan 2008 to Jan 2018



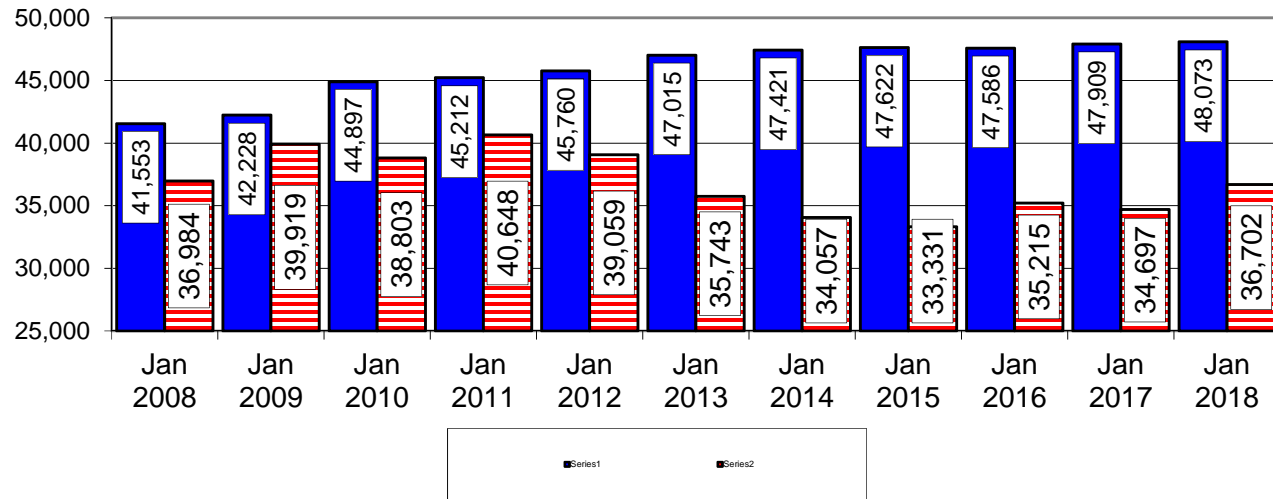
COUNTY JAIL CAPACITY - LAST 12 MONTHS



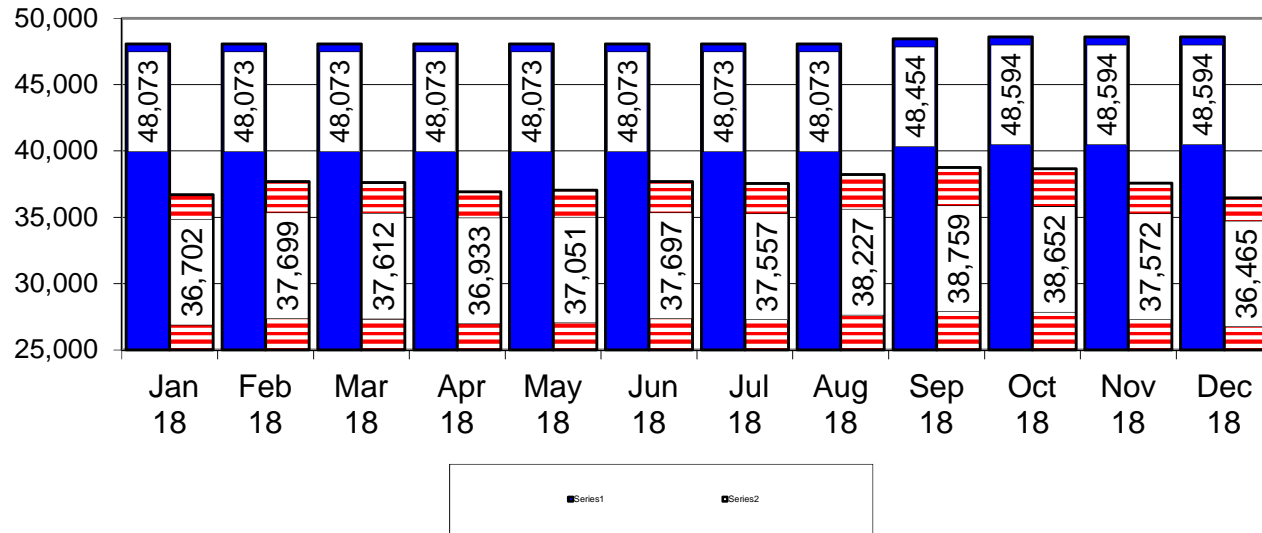


Source: All data in this report has been provided to DCA by the Georgia Bureau of Investigation (GBI).

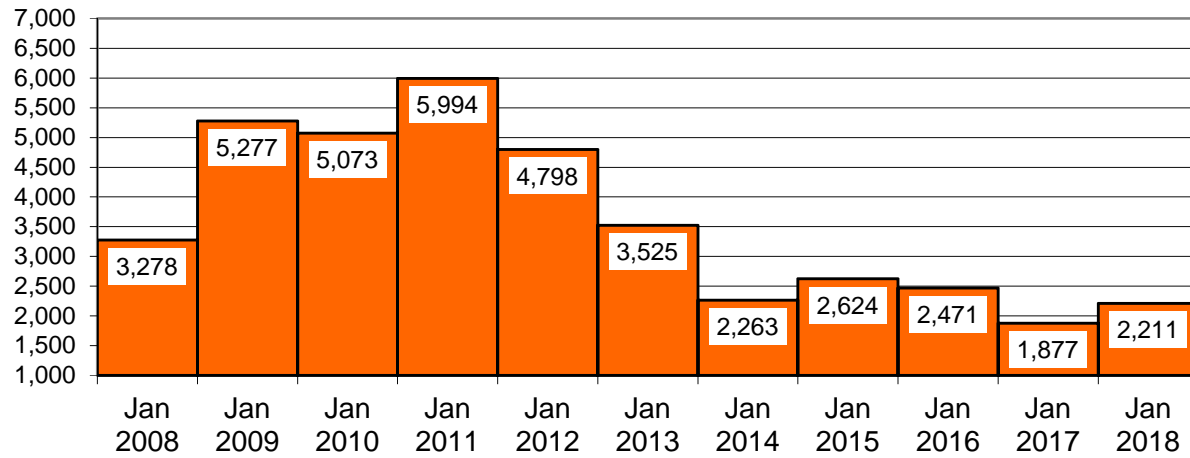
JAIL CAPACITY VS INMATE POPULATION - 10 Year ANNUAL TREND
Jan 2008 - Jan 2018



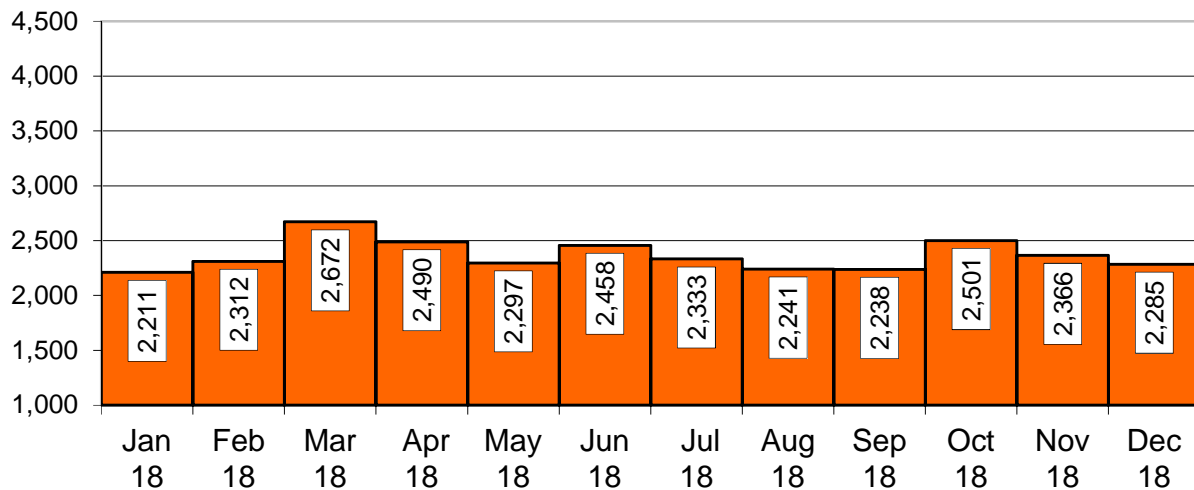
JAIL CAPACITY VS INMATE POPULATION - LAST 12 MONTHS

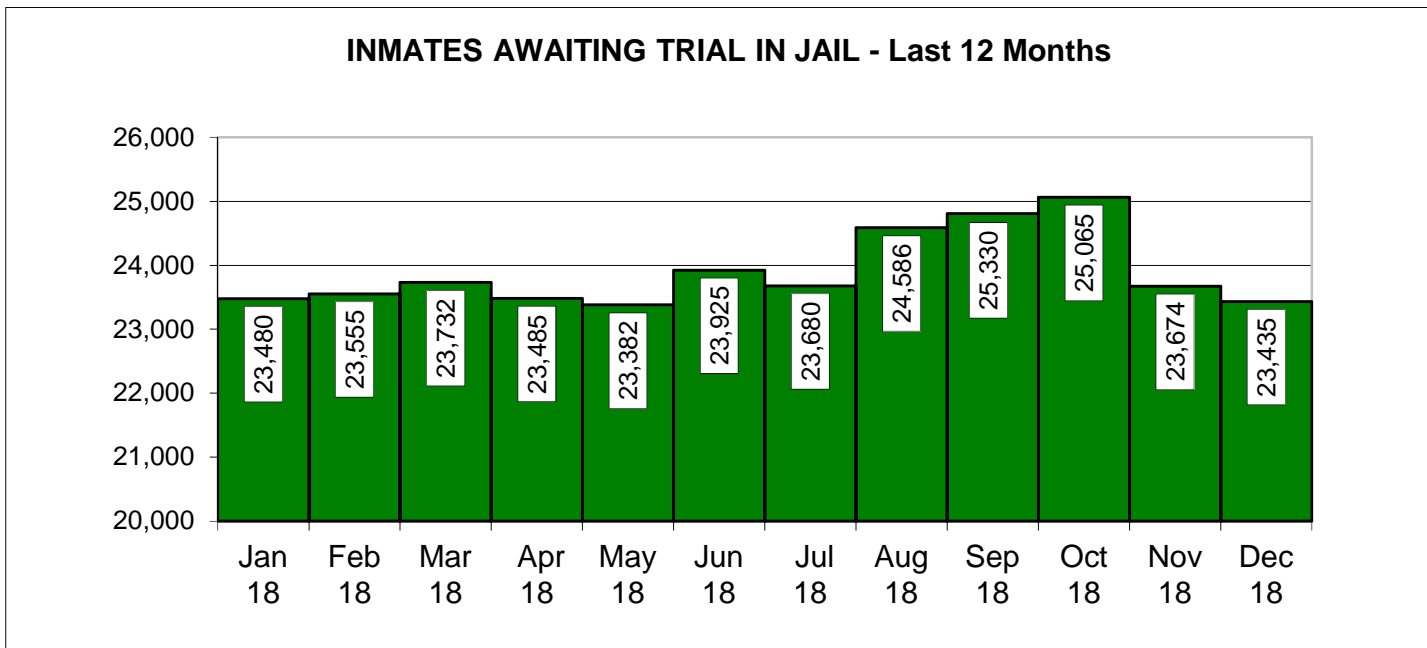
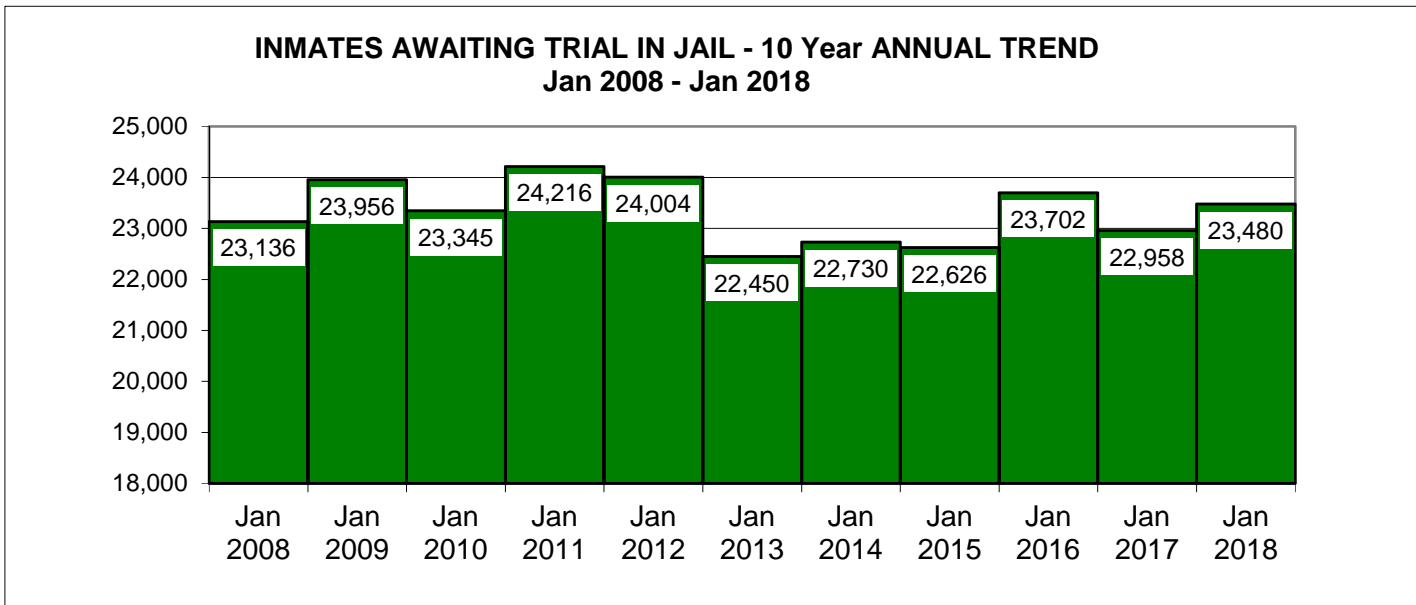


INMATES SENTENCED TO STATE - 10 Year ANNUAL TREND Jan 2008 - Jan 2018



INMATES SENTENCED TO STATE - Last 12 Months





County Jail Report
Primary Jail Capacity Data
Dec 2018

(Does not include Inmates housed in other detention facilities such as Work Release Centers, County Prisons, etc.)

Jurisdiction	Total Number of Inmates			Number of Inmates Sentenced to State		Number of Inmates Awaiting Trial in Jail		Number of Inmates Serving County Sentence		Number of Other Inmates		
	In Jail	Jail Capacity	Inmates as % of Capacity	Number	% of Total	Number	% of Total	Number	% of Total	Number	% of Total	
001	APPLING	71	84	85%	3	4%	41	58%	6	8%	21	30%
002	ATKINSON	16	18	89%	1	6%	15	94%	0	0%	0	0%
003	BACON	64	76	84%	0	0%	0	0%	43	67%	21	33%
004	BAKER NO JAIL	0	0	0%	0	0%	0	0%	0	0%	0	0%
005	BALDWIN	233	316	74%	0	0%	45	19%	96	41%	92	39%
006	BANKS	39	60	65%	2	5%	0	0%	3	8%	34	87%
007	BARROW	299	391	76%	25	8%	242	81%	24	8%	8	3%
008	BARTOW	659	471	140%	32	5%	399	61%	206	31%	22	3%
009	BEN HILL	92	136	68%	0	0%	81	88%	8	9%	3	3%
010	BERRIEN	76	74	103%	0	0%	0	0%	40	53%	36	47%
011	BIBB	865	966	90%	52	6%	366	42%	52	6%	395	46%
012	BLECKLEY	39	72	54%	2	5%	37	95%	0	0%	0	0%
013	BRANTLEY	115	124	93%	39	34%	35	30%	18	16%	23	20%
014	BROOKS	48	112	43%	1	2%	41	85%	3	6%	3	6%
015	BRYAN	47	68	69%	0	0%	44	94%	2	4%	1	2%
016	BULLOCH	400	387	103%	24	6%	235	59%	78	20%	63	16%
017	BURKE	106	138	77%	0	0%	72	68%	0	0%	34	32%
018	BUTTS	180	316	57%	1	1%	94	52%	15	8%	70	39%
019	CALHOUN	21	42	50%	5	24%	11	52%	5	24%	0	0%
020	CAMDEN	102	108	94%	1	1%	95	93%	2	2%	4	4%
021	CANDLER	33	72	46%	4	12%	21	64%	7	21%	1	3%
022	CARROLL	421	682	62%	2	0%	401	95%	6	1%	12	3%
023	CATOOSA	164	248	66%	0	0%	148	90%	12	7%	4	2%
024	CHARLTON NO JAIL	0	0	0%	0	0%	0	0%	0	0%	0	0%
025	CHATHAM	1658	1524	109%	26	2%	1534	93%	38	2%	60	4%
026	CHATTAHOOCHEE NO JAIL	0	0	0%	0	0%	0	0%	0	0%	0	0%
027	CHATTOOGA	44	46	96%	5	11%	17	39%	1	2%	21	48%
028	CHEROKEE	506	512	99%	6	1%	413	82%	86	17%	1	0%
029	CLARKE	373	590	63%	32	9%	288	77%	51	14%	2	1%
030	CLAY NO JAIL	0	0	0%	0	0%	0	0%	0	0%	0	0%
031	CLAYTON	1698	1920	88%	243	14%	188	11%	761	45%	506	30%
032	CLINCH NO JAIL	0	0	0%	0	0%	0	0%	0	0%	0	0%
033	COBB	1875	1925	97%	120	6%	1380	74%	375	20%	0	0%
034	COFFEE	359	448	80%	44	12%	187	52%	7	2%	121	34%
035	COLQUITT	215	210	102%	2	1%	129	60%	63	29%	21	10%
036	COLUMBIA	335	266	126%	13	4%	269	80%	38	11%	15	4%
037	COOK	94	108	87%	1	1%	22	23%	38	40%	33	35%
038	COWETA	380	300	127%	15	4%	215	57%	146	38%	4	1%
039	CRAWFORD	15	24	63%	3	20%	11	73%	1	7%	0	0%
040	CRISP	225	170	132%	17	8%	117	52%	9	4%	82	36%
041	DADE	70	99	71%	13	19%	36	51%	6	9%	15	21%
042	DAWSON	100	200	50%	6	6%	42	42%	51	51%	1	1%

County Jail Report
Primary Jail Capacity Data
Dec 2018

(Does not include Inmates housed in other detention facilities such as Work Release Centers, County Prisons, etc.)

Jurisdiction	Total Number of Inmates		Jail Capacity	Inmates as % of Capacity	Number of Inmates Sentenced to State		Number of Inmates Awaiting Trial in Jail		Number of Inmates Serving County Sentence		Number of Other Inmates	
	In Jail	Capacity			Number	% of Total	Number	% of Total	Number	% of Total	Number	% of Total
043	DECATUR	78	175	45%	9	12%	60	77%	5	6%	4	5%
044	DEKALB	1726	3636	47%	93	5%	1329	77%	235	14%	69	4%
045	DODGE	99	162	61%	1	1%	79	80%	1	1%	18	18%
046	DOOLY	70	155	45%	9	13%	50	71%	2	3%	9	13%
047	DOUGHERTY	628	1230	51%	34	5%	480	76%	95	15%	19	3%
048	DOUGLAS	655	1500	44%	25	4%	513	78%	89	14%	28	4%
049	EARLY	38	66	58%	1	3%	25	66%	3	8%	9	24%
050	ECHOLS	NO JAIL	0	0%	0	0%	0	0%	0	0%	0	0%
051	EFFINGHAM	195	230	85%	4	2%	177	91%	10	5%	4	2%
052	ELBERT	88	96	92%	5	6%	39	44%	14	16%	30	34%
053	EMANUEL	121	102	119%	12	10%	43	36%	5	4%	61	50%
054	EVANS	25	26	96%	7	28%	18	72%	0	0%	0	0%
055	FANNIN	60	84	71%	3	5%	54	90%	0	0%	3	5%
056	FAYETTE	223	384	58%	18	8%	165	74%	39	17%	1	0%
057	FLOYD	540	838	64%	10	2%	324	60%	113	21%	93	17%
058	FORSYTH	309	608	51%	68	22%	202	65%	39	13%	0	0%
059	FRANKLIN	70	72	97%	8	11%	38	54%	22	31%	2	3%
060	FULTON	2502	2688	93%	74	3%	1884	75%	147	6%	397	16%
061	GILMER	127	142	89%	3	2%	93	73%	6	5%	25	20%
062	GLASCOCK	NO JAIL	0	0%	0	0%	0	0%	0	0%	0	0%
063	GLYNN	426	610	70%	28	7%	244	57%	14	3%	140	33%
064	GORDON	303	376	81%	21	7%	183	60%	97	32%	2	1%
065	GRADY	73	125	58%	1	1%	49	67%	23	32%	0	0%
066	GREENE	52	125	42%	29	56%	17	33%	2	4%	4	8%
067	GWINNETT	2103	2744	77%	11	1%	1471	70%	46	2%	575	27%
068	HABERSHAM	157	130	121%	4	3%	141	90%	8	5%	4	3%
069	HALL	730	1026	71%	197	27%	302	41%	216	30%	15	2%
070	HANCOCK	17	80	21%	2	12%	10	59%	5	29%	0	0%
071	HARALSON	105	120	88%	10	10%	83	79%	11	10%	1	1%
072	HARRIS	65	100	65%	2	3%	36	55%	1	2%	26	40%
073	HART	62	50	124%	1	2%	58	94%	0	0%	3	5%
074	HEARD	44	60	73%	5	11%	32	73%	2	5%	5	11%
075	HENRY	778	908	86%	25	3%	311	40%	442	57%	0	0%
076	HOUSTON	417	507	82%	35	8%	324	78%	57	14%	1	0%
077	IRWIN	986	1201	82%	0	0%	18	2%	3	0%	965	98%
078	JACKSON	145	452	32%	0	0%	133	92%	9	6%	3	2%
079	JASPER	63	64	98%	5	8%	51	81%	5	8%	2	3%
080	JEFFDAVIS/HAZ	34	64	53%	7	21%	23	68%	2	6%	2	6%
081	JEFFERSON	66	128	52%	7	11%	0	0%	34	52%	25	38%
082	JENKINS	20	24	83%	0	0%	16	80%	1	5%	3	15%
083	JOHNSON	23	42	55%	7	30%	11	48%	0	0%	5	22%
084	JONES	92	125	74%	16	17%	61	66%	6	7%	9	10%

County Jail Report
Primary Jail Capacity Data
Dec 2018

(Does not include Inmates housed in other detention facilities such as Work Release Centers, County Prisons, etc.)

Jurisdiction	Total Number of Inmates In Jail	Jail Capacity	Inmates as % of Capacity	Number of Inmates Sentenced to State		Number of Inmates Awaiting Trial in Jail		Number of Inmates Serving County Sentence		Number of Other Inmates		
				Number	% of Total	Number	% of Total	Number	% of Total	Number	% of Total	
085	LAMAR	54	158	34%	7	13%	12	22%	34	63%	1	2%
086	LANIER NO JAIL	0	0	0%	0	0%	0	0%	0	0%	0	0%
087	LAURENS	173	270	64%	11	6%	146	84%	7	4%	9	5%
088	LEE	78	112	70%	0	0%	73	94%	1	1%	4	5%
089	LIBERTY	182	300	61%	7	4%	141	77%	15	8%	19	10%
090	LINCOLN	68	81	84%	18	26%	14	21%	8	12%	28	41%
091	LONG NO JAIL	0	0	0%	0	0%	0	0%	0	0%	0	0%
092	LOWNDES	600	920	65%	45	8%	457	76%	70	12%	28	5%
093	LUMPKIN	137	150	91%	28	20%	67	49%	10	7%	32	23%
094	MCDUFFIE	93	222	42%	6	6%	69	74%	2	2%	16	17%
095	MCINTOSH	88	114	77%	0	0%	74	84%	4	5%	10	11%
096	MACON	23	68	34%	0	0%	23	100%	0	0%	0	0%
097	MADISON	82	96	85%	1	1%	37	45%	8	10%	36	44%
098	MARION	24	30	80%	0	0%	17	71%	5	21%	2	8%
099	MERIWETHER	76	106	72%	0	0%	66	87%	1	1%	9	12%
100	MILLER	23	70	33%	1	4%	8	35%	10	43%	4	17%
101	MITCHELL	50	116	43%	0	0%	40	80%	10	20%	0	0%
102	MONROE	90	168	54%	5	6%	78	87%	1	1%	6	7%
103	MONTGOMERY NO JAIL	0	0	0%	0	0%	0	0%	0	0%	0	0%
104	MORGAN	58	192	30%	0	0%	40	69%	15	26%	3	5%
105	MURRAY	162	160	101%	17	10%	140	86%	4	2%	1	1%
106	MUSCOGEE	1106	1069	103%	85	8%	875	79%	72	7%	74	7%
107	NEWTON	388	600	65%	83	21%	233	60%	72	19%	0	0%
108	OCONEE	31	136	23%	6	19%	20	65%	4	13%	1	3%
109	OGLETHORPE	72	64	113%	6	8%	26	36%	13	18%	27	38%
110	PAULDING	204	299	68%	9	4%	153	75%	35	17%	7	3%
111	PEACH	87	125	70%	2	2%	79	91%	2	2%	4	5%
112	PICKENS	79	140	56%	5	6%	39	49%	28	35%	7	9%
113	PIERCE	73	72	101%	5	7%	64	88%	4	5%	0	0%
114	PIKE	19	34	56%	0	0%	16	84%	3	16%	0	0%
115	POLK	188	362	52%	8	4%	52	28%	13	7%	115	61%
116	PULASKI	25	42	60%	0	0%	25	100%	0	0%	0	0%
117	PUTNAM	76	120	63%	6	8%	48	63%	18	24%	4	5%
118	QUITMAN NO JAIL	0	0	0%	0	0%	0	0%	0	0%	0	0%
119	RABUN	101	102	99%	0	0%	68	67%	28	28%	5	5%
120	RANDOLPH	47	121	39%	5	11%	38	81%	4	9%	0	0%
121	RICHMOND	933	910	103%	29	3%	765	82%	7	1%	132	14%
122	ROCKDALE	331	692	48%	5	2%	277	84%	27	8%	22	7%
123	SCHLEY	7	12	58%	3	43%	2	29%	2	29%	0	0%
124	SCREVEN	49	247	20%	8	16%	20	41%	9	18%	12	24%
125	SEMINOLE	54	54	100%	1	2%	49	91%	2	4%	2	4%
126	SPALDING	442	547	81%	17	4%	404	91%	19	4%	2	0%

County Jail Report
Primary Jail Capacity Data
Dec 2018

(Does not include Inmates housed in other detention facilities such as Work Release Centers, County Prisons, etc.)

Jurisdiction	Total Number of Inmates In Jail	Jail Capacity	Inmates as % of Capacity	Number of Inmates Sentenced to State		Number of Inmates Awaiting Trial in Jail		Number of Inmates Serving County Sentence		Number of Other Inmates		
				Number	% of Total	Number	% of Total	Number	% of Total	Number	% of Total	
127	STEPHENS	149	192	78%	21	14%	115	77%	2	1%	11	7%
128	STEWART NO JAIL	0	0	0%	0	0%	0	0%	0	0%	0	0%
129	SUMTER	156	262	60%	9	6%	96	62%	1	1%	50	32%
130	TALBOT NO JAIL	0	0	0%	0	0%	0	0%	0	0%	0	0%
131	TALIAFERRO NO JAIL	0	0	0%	0	0%	0	0%	0	0%	0	0%
132	TATTNALL	96	136	71%	4	4%	61	64%	5	5%	26	27%
133	TAYLOR	24	62	39%	0	0%	11	46%	3	13%	10	42%
134	TELFAIR	34	36	94%	0	0%	34	100%	0	0%	0	0%
135	TERRELL	35	55	64%	1	3%	17	49%	0	0%	17	49%
136	THOMAS	191	270	71%	4	2%	156	82%	27	14%	4	2%
137	TIFT	215	260	83%	12	6%	39	18%	105	49%	59	27%
138	TOOMBS	114	128	89%	20	18%	90	79%	3	3%	1	1%
139	TOWNS	51	50	102%	0	0%	46	90%	4	8%	1	2%
140	TREUTLEN	37	42	88%	0	0%	16	43%	4	11%	17	46%
141	TROUP	483	540	89%	45	9%	304	63%	127	26%	7	1%
142	TURNER	49	102	48%	0	0%	0	0%	32	65%	17	35%
143	TWIGGS	27	48	56%	0	0%	0	0%	24	89%	3	11%
144	UNION	69	57	121%	28	41%	34	49%	4	6%	3	4%
145	UPSON	108	213	51%	3	3%	82	76%	15	14%	8	7%
146	WALKER	219	225	97%	32	15%	177	81%	10	5%	0	0%
147	WALTON	400	440	91%	44	11%	272	68%	70	18%	14	4%
148	WARE	395	500	79%	16	4%	210	53%	77	19%	92	23%
149	WARREN NO JAIL	0	0	0%	0	0%	0	0%	0	0%	0	0%
150	WASHINGTON	54	236	23%	4	7%	0	0%	9	17%	41	76%
151	WAYNE	121	170	71%	0	0%	0	0%	36	30%	85	70%
152	WEBSTER NO JAIL	0	0	0%	0	0%	0	0%	0	0%	0	0%
153	WHEELER	16	18	89%	0	0%	12	75%	0	0%	4	25%
154	WHITE	130	176	74%	2	2%	106	82%	14	11%	8	6%
155	WHITFIELD	450	551	82%	54	12%	306	68%	45	10%	45	10%
156	WILCOX	15	16	94%	7	47%	2	13%	6	40%	0	0%
157	WILKES	25	80	31%	1	4%	15	60%	6	24%	3	12%
158	WILKINSON	33	44	75%	5	15%	24	73%	0	0%	4	12%
159	WORTH	44	46	96%	7	16%	37	84%	0	0%	0	0%
	Grand Totals	36,465	48,594	75%	2,285	6%	23,435	64%	5,302	15%	5,443	15%