



NOMINATION FOR THE 2008 MAGNOLIA AWARDS

ASHFORD PARKSIDE SENIOR RESIDENCES



NORSOUTH



PHASE 1 PARTIAL DEMOLITION





PHASE 2

2A ASHFORD PARKSIDE

2B ASHFORD LANDING

2C ROAD IMPROVEMENTS, BLAIR EXTENSION, DONALDSON TRAFFIC CALMING,
JOHNSON FERRY INTERSECTION IMPROVEMENTS AT PUBLIX AND BLAIR

2D PATH TO NEW PARK

2E NEW PARK IMPROVEMENTS



PHASE 3
 3A FAMILY HOUSING, LEASE TO PURCHASE
 3B FIRST CONCEPTUAL PART OF RESIDENTIAL
 OVER RETAIL COMPONENT



PHASE 4
 BALANCE OF DEMOLITION



PHASE 5

- 5A BALANCE OF ROAD IMPROVEMENTS
- 5B BALANCE OF CONCEPTUAL RESIDENTIAL OVER RETAIL
- 5C BALANCE OF PARK IMPROVEMENTS
- 5D BALANCE OF BIKE PATH
- 5E LUXURY SINGLE FAMILY & TOWNHOMES
- 5F MARKET SIDE VILLAS, BALANCE OF SENIOR HOUSING



MASTER PLAN

ASHFORD PARKSIDE & ASHFORD LANDING MASTER PLAN



ASHFORD PARKSIDE SENIOR RESIDENCES



MARTIN RILEY ASSOCIATES - ARCHITECTS, P.C.
22 CHURCH STREET SUITE 200 DUBLIN GEORGIA 30128 404-273-2800



ASHFORD PARKSIDE SENIOR RESIDENCES











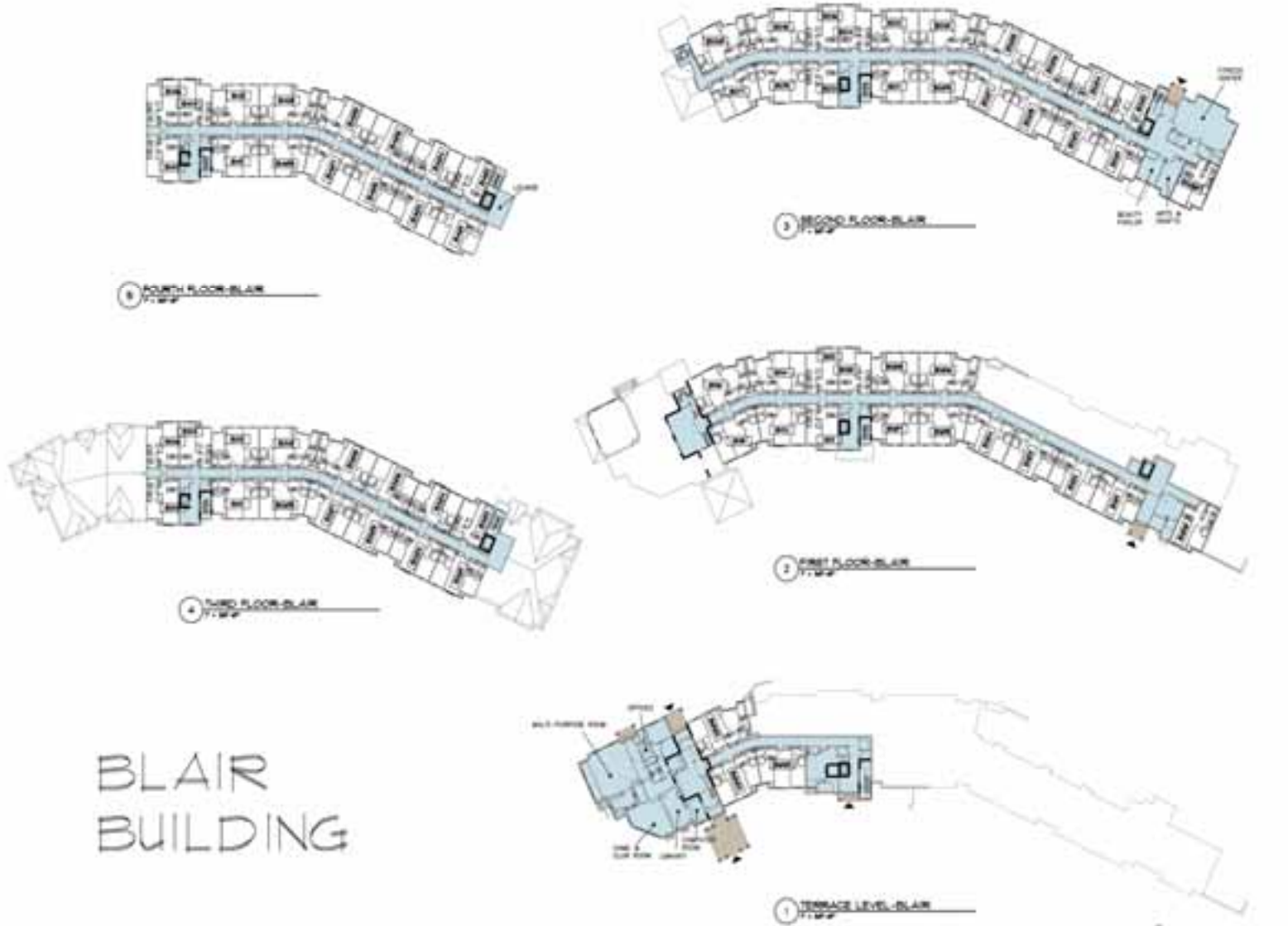








BLAIR BUILDING



DATE	11/11/11
BY	AS/MS/BL
CHECKED	AS/MS/BL
APPROVED	AS/MS/BL

MARTIN RILEY ASSOCIATES - ARCHITECTS, P.C.
 20 CHURCH STREET SUITE 300 DECATUR GEORGIA 30030-2500 404-253-3800
 ARCHITECTS OF RECORD
 LANE SAFETY PLANING, LLC
 LANE SAFETY PLANING, LLC

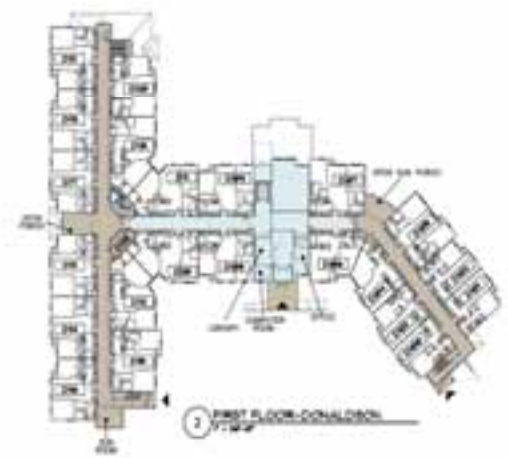


A03

11/11/11 11:00 AM 11/11/11 11:00 AM 11/11/11 11:00 AM 11/11/11 11:00 AM 11/11/11 11:00 AM

DATE: 11/11/11 11:58 AM 11/11/11 11:58 AM 11/11/11 11:58 AM 11/11/11 11:58 AM 11/11/11 11:58 AM 11/11/11 11:58 AM 11/11/11 11:58 AM 11/11/11 11:58 AM 11/11/11 11:58 AM 11/11/11 11:58 AM

DONALDSON BUILDING



NO.	DATE	BY	CHKD.

MARTIN RILEY ASSOCIATES - ARCHITECTS, P.C.
 20 CHURCH STREET SUITE 300 DUBLIN GEORGIA 30128 404-271-2800
 ASSIGNED PARASITIC: DONALDSON
 LRF: RILEY, P. J. - DONALDSON



RELEASED FOR CONSTRUCTION

A0.2













○ ONE BEDROOM 4h UNIT
 1/4" = 1'-0"

DATE	
BY	
CHECKED	
SCALE	

MARTIN RILEY ASSOCIATES - ARCHITECTS, P.C.
 25 CHURCH STREET SUITE 200 BROOKLYN, ONTARIO L6M 3K8 416-739-2882
 Ashford Parkside





○ ONE BEDROOM A-2 UNIT
 1/4" = 1'-0"

NO.	DATE	REVISION

MARTIN RILEY ASSOCIATES - ARCHITECTS, P.C.
 25 CUMMINS CENTER DRIVE 2ND FLOOR CHICAGO, ILLINOIS 60601-4470-300
 Ashford Parkside





○ TWO BEDROOM B UNIT W/TUB
 1/4" = 1'-0"

NO.	DATE	REVISION

MARTIN RILEY ASSOCIATES - ARCHITECTS, P.C.
 25 CUNNING STREET SUITE 200 BOSTON, MASSACHUSETTS 02116
 617-552-1200
 Ashford Parkside



ASHFORD PARKSIDE SENIOR RESIDENCES





